

POT BEARING DATA & DETAILS																									FED. ROAD DIV. NO.	STATE	FED. AID PROJ. NO.
LOCATION	GIRDER	QUAN.	BEARING TYPE	SLOPE	MAX. VERT. LIFT (IN.)	LAT. (D°)	NIT/EA (100')	①	②	③	④	⑤	⑥	⑦	⑧	⑨	⑩	⑪	⑫	⑬	A	B	C	MINI VERT. LIFT (IN.)	○	○	○
PIER 1	4	1	F-900	+2.2	892	90	1113	22.6	22.6	15.48	97	1.47	1.50	5.73	7.8	2.08	—	—	—	—	30.3	13.6	2.3	5.55			
PIER 1	7	1	F-900	+2.4	892	90	1113	22.6	22.6	15.48	97	1.49	1.50	5.73	7.8	2.08	—	—	—	—	30.3	13.6	2.3	5.55			
PIER 5	4.5	2	F-1100	-1.4	1061	110	1443	25.6	25.6	20.16	104	1.40	1.71	6.17	8.1	2.27	—	—	—	—	33.4	14.8	2.5	6.50			
PIER 2-SPAN 2	1	1	N-350 (2)	+2.7	301	35	403	14.3	15.3	10.74	143	1.04	1.05	4.40	1.00	4.48	5.3	1.40	1	2	22.5	9.6	14.3	122			
	2	1		+2.5								1.09	1.45														
	3.6	2		+2.3								1.07	1.43														
	5.9, 9	3		+2.2								1.08	1.42														
PIER 2-SPAN 2	10	1	N-350 (2)	+2.1	301	35	403	14.3	15.3	10.74	143	1.08	1.05	1.42	1.00	4.48	5.3	1.40			22.5	9.6	14.3	122			
ABUT. 1	1	1	N-400 (2)	+2.8	356	40	451	15.3	16.3	11.89	153	1.00	1.23	1.46	1.02	4.50	5.12	1.50			23.2	9.7	13.2	151			
	3.5	2		+2.4								1.03	1.43														
	6	1		+2.7								1.04	1.42														
	8.9	2		+2.3								1.01	1.45														
ABUT. 1	2.10	2	N-400 (2)	+2.6	356		451	15.3	16.3			1.01	1.23	1.45		4.50	5.12			2						151	
ABUT. 2	1	1	N-400 (7)	-2.8	369		526	16.4	21.3			1.36	1.66	1.96		4.93	6.4			7						195	
ABUT. 2	2.3, 4.7, 8	5	N-400 (7)	-2.7	369	40	526	16.4	21.3	11.89	153	1.35	1.66	1.97	1.02	4.93	6.4	1.50		7	23.3	9.7	13.3	195			
PIER 2-SPAN 3	1	1	N-600 (9)	+1.3	500	60	730	21.4	26.4	14.11	153	1.81	2.04	2.21	1.20	5.85	7.3	1.71		9	28.2	11.5	19	273			
	2	1		+1.2								1.88		2.20													
	3	1		+1.1								1.89		2.19													
	6	1		+0.9								1.92		2.16													
	7	1		+0.8								1.93		2.15													
PIER 2-SPAN 3	8	1	N-600 (9)	+0.7	500	60	730	21.4	26.4	14.11	153	1.95	2.04	2.18	1.20	5.85	7.3	1.71		9	28.2	11.5	19	273			
PIER 6	12.3, 9.7, 8	6	N-1000 (3)	-2.4	952	100	1410	29.2	25	13.09	24	1.61	1.91	2.21	1.57	6.45	8.5	2.18		5	31.3	13.2	24.2	580			
PIER 7	1, 9.3, 6	4	N-1100 (5)	-2.8	1022	110	1654	28.3	28.3	20.16	253	1.65	2.05	2.45	1.71	7.12	9.6	2.27		5	33.4	14.3	28.2	653			
PIER 7	7.8	2	N-1100 (5)	-2.7	1022	110	1654	28.3	28.3	20.16	253	1.64	2.05	2.46	1.71	7.12	9.6	2.27		5	33.4	14.3	28.2	653			
PIER 4	1	1	N-1800 (3)	+0.1	1420	150	2472	29.4	30.4	23.32	294	2.07	2.09	2.11	1.95	7.85	10.5	2.65		3	38.3	16.3	29.3	910			
	2.3	2		0.0								2.09		2.09													
	6	1		-0.4								2.03		2.15													
	7	1		-0.6								2.08		2.18													
PIER 4	8	1	N-1500 (3)	-0.8	1420	150	2472	29.4	30.4	23.32	294	1.97	2.09	2.11	1.95	7.85	10.5	2.65		3	38.3	16.3	29.3	910			
PIER 3	1	1	N-1800 (7)	+0.9	1715	180	3272	33	37	24.63	32	2.11	2.28	2.46	2.08	8.39	11.3	2.86		7	42.2	18.4	32.8	1210			
	2	1		+0.8								2.13		2.43													
	3	1		+0.7								2.15		2.41													
	6	1		+0.5								2.19		2.37													
	7	1		+0.4								2.21		2.35													
PIER 3	8	1	N-1800 (7)	+0.3	1715	180	3272	33	37	25.63	32	2.22	2.28	2.34	2.08	8.39	11.3	2.86		7	42.2	18.4	32.8	1210			
PIER 2-SPAN 2	4.7	2	G-350 (2)	+2.3	301	35	403	14.3	15.3	10.74	143	1.07	1.25	1.45	1.00	4.48	5.3	1.40		2	11.2	23.3	9.6	14.3	122		
ABUT. 1	4	1	G-400 (2)	+2.2	356	40	451	15.3	16.3	11.89	153	1.05	1.23	1.41	1.02	4.50	5.12	1.50		2	12.3	23.3	9.7	15.3	151		
ABUT. 1	7	1	G-400 (2)	+2.5	356	40	451	15.3	16.3	11.89	153	1.02	1.23	1.44	1.02	4.50	5.12	1.50		2	12.3	23.3	9.7	15.3	151		
ABUT. 2	4.5	2	G-400 (7)	-2.9	369	40	526	16.4	21.3	11.89	153	1.35	1.66	1.97	1.02	4.93	6.4	1.50		7	12.3	23.3	9.7	15.3	151		
PIER 2-SPAN 3	4.5	2	G-600 (9)	+1.0	500	60	730	21.4	26.4	14.11	153	1.91	2.04	2.17	1.20	5.85	7.3	1.71		9	15.2	28.3	11.5	19	273		
PIER 1 *	1	1	G-900 (2)	+2.7	892	90	1225	22.6	23	18.48	22.8	1.99	1.90	2.21	1.50	6.53	8.6	2.08		2	18.2	30.3	13.3	2.3	5.55		
	* 2	1		+2.6								1.60		2.20													
	* 3.9, 10	4		+2.4								1.63		2.17													
PIER 1 *	3.6	2	G-900 (2)	+2.5	893	90	1225	22.6	23	18.48	22.8	1.61	1.90	2.19	1.50	6.53	8.6	2.08		2	18.2	30.3	13.3	2.3	5.55		
PIER 6	4.5	2	G-1000 (3)	-2.4	953	100	1410	29.2	29	13.09	24	1.61	1.91	2.21	1.57	6.45	8.5	2.18		3	19.3	31.3	13.3	24.2	580		
PIER 7	4.5	2	G-1100 (5)	-2.8	1022	110	1654	28.3	28.3	20.16	253	1.65	2.05	2.45	1.71	7.12	9.6	2.27		5	20.3	33.4	14.3	28.2	653		
PIER 5 *	1.3, 3	3	G-1100 (2)	-1.2	1061	110	1633		25.3			1.86	2.01	2.16						2						650	
	* 6	1		-1.4								1.83		2.19													
	* 7	1		-1.5								1.82		2.20													
PIER 5 *	8	1	G-1100 (2)	-1.6	1061	110	1633	25.3	25.3	20.16	253	1.81	2.01	2.21	1.71	7.08	9.2	2.27		2	20.3	33.4	14.3	25.3	650		
PIER 4	4.5	2	G-1100 (3)	-0.3	1420	150	2472	29.4	30.4	23.32	294	2.09	2.14	2.19	1.95	7.95	10.5	2.65		3	23.3	38.3	16.3	29.3	910		
PIER 3	4	1	G-1800 (7)	+0.7	1715	180	3272	33	37	25.63	32	2.15	2.28	2.41	2.08	8.39	11.3	2.86		7	26.2	42.2	18.4	32.8	1250		
PIER 3	5	1	G-1800 (7)	+0.6	1715	180	3272	33	37	25.63	32	2.17	2.28	2.39	2.08	8.39	11.3	2.86		7	26.2	42.2	18.4	32.8	1250		

GENERAL NOTES:

- ALL STEEL: A588 U.N.O.
- NEOPRENE: A.A.S.H.T.O. 50 DUROMETER.
- STAINLESS FACING: 14 GA. A140 TYPE 304 MIRROR FINISH.
- RETENTION: .06" (.015 RADIAN).
- MOVEMENT: SEE PLAN.
- COATING: ZINC METALIZED PER AWS C2.2 WITH 8ML EXTERNAL DRY COAT THICKNESS & 2ML INTERNAL THICKNESS.
- ⊗ INDICATES THICK EDGE OF TOP PLATE.
- MAGNETIC PARTICLE TESTING REQUIRED FOR 10% OF WELD LENGTH.
- BEARINGS TO BE SHIP ASSEMBLED, MATCH MARKED, AND SHIPPED AS A UNIT.
- 10 UPLIFT RESTRAINTS REQUIRED FOR PIER 2-SPAN 3 BEARINGS ONLY. REFER TO DWG. D-1003-1A FOR DETAILS.
- FOR PARTS DETAILS REFER TO DWGS. D-1001-1B THRU D-1001-1F.
- ZINC METALIZE ALL SURFACES AS PER NOTE 6 (UNLESS NOTED ON PARTS DWGS. D-1001-1D, E, F) AFTER COMPLETING ALL SHOP WELDING. MASK STAINLESS STEEL & TEFLOON TO PREVENT OVER SPRAY. A588 STEEL NOT METALIZED TO RECEIVE ONE COAT BOILED UNUSSED OIL OR APPROVED EQUAL.

REVISIONS:

NO.	REVISION	DATE
1	REMOVED SNAW FROM X-REF	12-13-84
2	REV. DIM. ① ON G-1100 BRG	11-14-84
3	ALTERED AS PER 10-11-84 APPROVAL	9-28-84
4	Dimension Changes & Uplift Details	10-11-84

STATE OF MAINE - DEPT. OF TRANSPORTATION
I-395 BRIDGE OVER PENOBSCOT RIVER
BANGOR-BREWER PENOBSCOT COUNTY

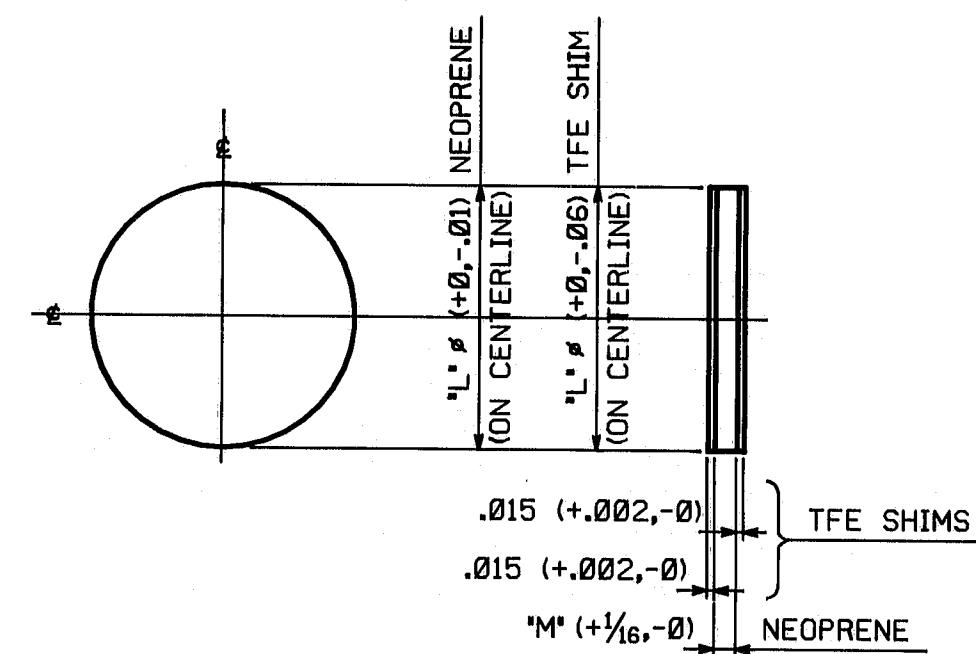
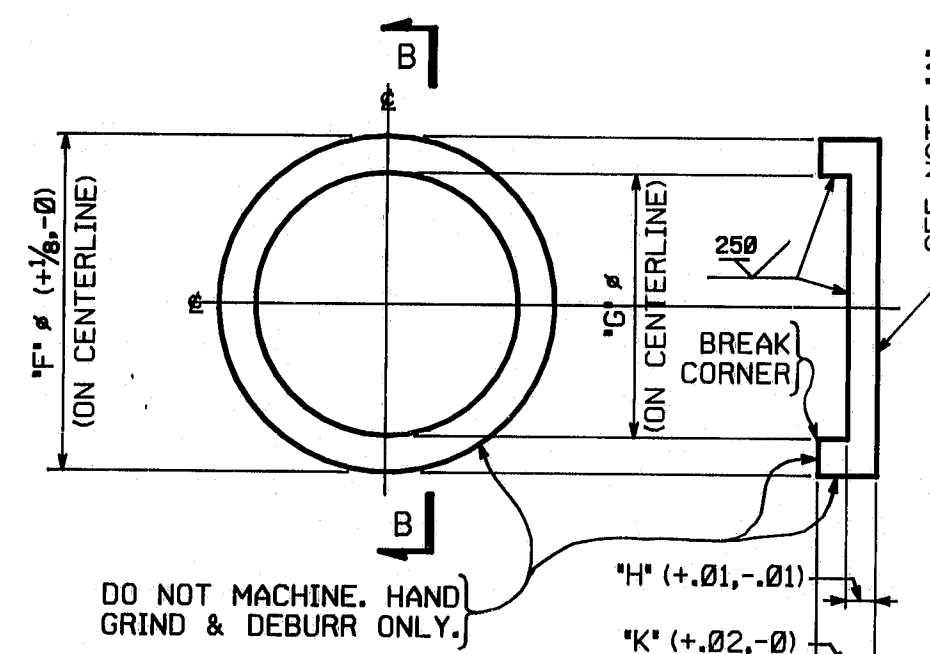
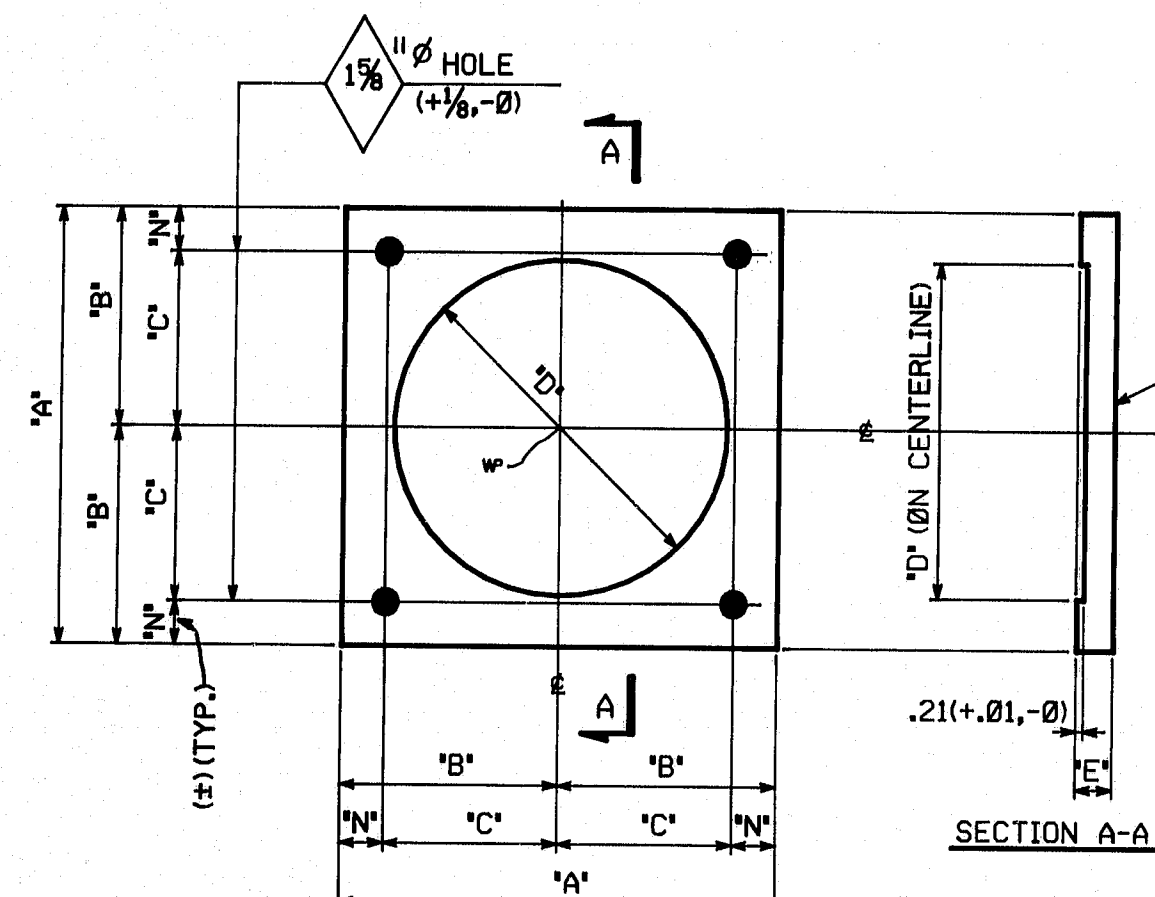
BEARING DETAILS BY BOWMAN CORP. INT'L. FAIRFIELD, N.J. JOB #1177-4

STATE CONTRACT OR REF. NO. **6** CONTRACTOR **CIAMBRO CORP.**

IN CHARGE: **M. BUTAS** CHKD. BY: **5-25-84** DATE: **6-28-84**

CONTRACT ME-84088-123 DRAWING NUMBER: **D-1001-1A**

R95-153



MASONRY PLATES

LOCATION	GIRDER	BRG. TYPE	"A"	"B"	"C"	"D"	"E"	"H"
PIER 2	12.35 6.8,3.18	N-350(2)	1'-10 1/8"	11 1/8"	9 1/8"	1'-2 7/8"	1.46	2 1/4"
SPAN 2	4,7	G-350(2)						
ABUT. 1	12.35 6.8,3.18	N-400(2)						
ABUT. 2	12.35 6.8,3.18	N-400(7)	1'-11 1/2"	11 1/4"	9 1/2"	1'-3 3/4"	1.50	2 1/4"
ABUT. 1	4,7	G-400(2)						
ABUT. 2	4,5	G-400(7)						
PIER 1	4,7	F-900	2'-6 3/4"	1'-3 3/4"	1'-1 1/4"	1'-11"	2.08	2 1/4"
	12.35 6.8,3.18	G-900(2)						
PIER 6	12.35 6.8,3.18	N-1000(3)	2'-7 7/8"	1'-3 15/16"	1'-14 1/8"	2'-0 7/8"	2.18	2 1/4"
	4,5	G-1000(3)						
PIER 5	4,5	F-1100						
	12.35 6.8,3.18	N-1100(5)	2'-9 1/4"	1'-4 1/4"	1'-2 1/4"	2'-1 1/2"	2.27	2 1/4"
PIER 7	4,5	G-1100(5)						
	12.35 6.8,3.18	G-1100(2)						
PIER 5	12.35 6.8,3.18	N-1500(3)	3'-2 3/4"	1'-7 3/4"	1'-4 3/4"	2'-5 3/8"	2.65	3"
PIER 4	4,5	G-1500(3)						
PIER 3	12.35 6.8,3.18	N-1800(7)	3'-6 1/2"	1'-9 1/4"	1'-6 1/4"	2'-8 1/8"	2.86	3"
	4,5	G-1800(7)						
DIMENSION TOLERANCES			+1/8"-0	+1/8"-0	+1/8"-1/16"	+1/8"-0	+0.06"-0	--

BASE PLATES

LOCATION	GIRDER	BRG. TYPE	"F"	"G"	"H"	"K"
PIER 2	12.35 6.8,3.18	N-350(2)	1'-2 3/4"	10.74 (+.008,-0)	1.00	2.49
SPAN 2	4,7	G-350(2)				
ABUT. 1	12.35 6.8,3.18	N-400(2)				
ABUT. 2	12.35 6.8,3.18	N-400(7)	1'-3 3/4"	11.89 (+.009,-0)	1.02	2.53
ABUT. 1	4,7	G-400(2)				
ABUT. 2	4,5	G-400(7)				
PIER 2	12.35 6.8,3.18	N-600(3)	1'-6 7/8"	14.11 (+.010,-0)	1.20	2.93
SPAN 3	4,5	G-600(3)				
PIER 1	4,7	F-900	1'-10 1/8"	18.48 (+.010,-0)	1.50	3.70
	12.35 6.8,3.18	G-900(2)				
PIER 6	12.35 6.8,3.18	N-1000(3)	2'-0"	19.09 (+.012,-0)	1.57	3.80
	4,5	G-1000(3)				
PIER 5	4,5	F-1100				
	12.35 6.8,3.18	N-1100(5)	2'-1 1/4"	20.16 (+.012,-0)	1.71	4.10
PIER 7	4,5	G-1100(5)				
	12.35 6.8,3.18	G-1100(2)				
PIER 5	12.35 6.8,3.18	N-1500(3)	2'-5 1/4"	23.32 (+.012,-0)	1.95	4.56
PIER 4	4,5	G-1500(3)				
PIER 3	12.35 6.8,3.18	N-1800(7)	2'-8"	25.63 (+.012,-0)	2.08	5.00
	4,5	G-1800(7)				

NEOPRENE AND TFE SHIMS

LOCATION	GIRDER	BRG. TYPE	"L"	"M"
PIER 2	12.35 6.8,3.18	N-350(2)	10.74	3/4"
SPAN 2	4,7	G-350(2)		
ABUT. 1	12.35 6.8,3.18	N-400(2)		
ABUT. 2	12.35 6.8,3.18	N-400(7)	11.89	3/4"
ABUT. 1	4,7	G-400(2)		
ABUT. 2	4,5	G-400(7)		
PIER 2	12.35 6.8,3.18	N-600(3)	14.11	1"
SPAN 3	4,5	G-600(3)		
PIER 1	4,7	F-900	18.48	1 1/4"
	12.35 6.8,3.18	G-900(2)		
PIER 6	12.35 6.8,3.18	N-1000(3)	19.09	1 1/4"
	4,5	G-1000(3)		
PIER 5	4,5	F-1100		
	12.35 6.8,3.18	N-1100(5)	20.16	1 3/4"
PIER 7	4,5	G-1100(5)		
	12.35 6.8,3.18	G-1100(2)		
PIER 5	12.35 6.8,3.18	N-1500(3)	23.32	1 1/2"
PIER 4	4,5	G-1500(3)		
PIER 3	12.35 6.8,3.18	N-1800(7)	25.63	1 3/4"
	4,5	G-1800(7)		

REQUIRED PER SHIPMENT		BILL OF MATERIAL		FED. ROAD DIV. NO.		STATE		FED. AID PROJ. NO.	
#1	#2	#3	NO.	BRG. TYPE	DESCRIPTION	LENGTH	REMARKS	ITEM	SHIP. WEIGHT
10	--	--	10	350	22 1/2" x 1.46	1	10 1/2"	1A	10
10	--	8	18	400	23 1/2" x 1.50	1	11 1/2"	1A	9
10	--	--	10	900	30 3/4" x 2.08	2	6 3/4"	1A	7
--	--	8	8	1000	31 1/2" x 2.18	2	7 1/4"	1A	6
--	--	16	16	1100	33 1/4" x 2.27	2	9 1/4"	1A	5
--	8	--	8	1500	38 3/4" x 2.65	3	2 3/4"	1A	4
--	8	--	8	1800	42 1/2" x 2.86	3	6 1/2"	1A	3
BASE PLATES									
10	--	--	10	350	1'-2 3/4" x 2.49" THK.			1A	20
10	--	8	18	400	1'-3 3/4" x 2.53" THK.			1A	19
--	8	--	8	600	1'-6 7/8" x 2.93" THK.			1A	18
10	--	--	10	900	1'-10 1/8" x 3.70" THK.			1A	17
--	--	8	8	1000	2'-0" x 3.80" THK.			1A	16
--	--	16	16	1100	2'-1 1/4" x 4.10" THK.			1A	15
--	8	--	8	1500	2'-5 1/4" x 4.56" THK.			1A	14
--	8	--	8	1800	2'-8" x 5.00" THK.			1A	13
NEOPRENE									
10	--	--	10	350	10.74" x 3/4" THK.		ASHTO GRADE 50 DUROMETER	1D	10
10	--	8	18	400	11.89" x 3/4" THK.		ASHTO GRADE 50 DUROMETER	1D	9
--	8	--	8	600	14.11" x 1" THK.		ASHTO GRADE 50 DUROMETER	1D	8
10	--	--	10	900	18.48" x 1 1/4" THK.		ASHTO GRADE 50 DUROMETER	1D	7
--	--	8	8	1000	19.09" x 1 1/4" THK.		ASHTO GRADE 50 DUROMETER	1D	6
--	--	16	16	1100	20.16" x 1 3/4" THK.		ASHTO GRADE 50 DUROMETER	1D	5
--	8	--	8	1500	23.32" x 1 1/2" THK.		ASHTO GRADE 50 DUROMETER	1D	4
--	8	--	8	1800	25.63" x 1 3/4" THK.		ASHTO GRADE 50 DUROMETER	1D	3
TFE SHIMS									
20	--	--	20	350	10.74" x .015" THK.		VIRGIN CHEMFLUOR T.F.E.	1D	21
20	--	16	36	400	11.89" x .015" THK.		VIRGIN CHEMFLUOR T.F.E.	1D	20
--	16	--	16	600	14.11" x .015" THK.		VIRGIN CHEMFLUOR T.F.E.	1D	19
20	--	--	20	900	18.48" x .015" THK.		VIRGIN CHEMFLUOR T.F.E.	1D	18
--	--	16	16	1000	19.09" x .015" THK.		VIRGIN CHEMFLUOR T.F.E.	1D	17
--	--	32	32	1100	20.16" x .015" THK.		VIRGIN CHEMFLUOR T.F.E.	1D	16
--	16	--	16	1500	23.32" x .015" THK.		VIRGIN CHEMFLUOR T.F.E.	1D	15
--	16	--	16	1800	25.63" x .015" THK.		VIRGIN CHEMFLUOR T.F.E.	1D	14

NOTES:

NOTE "A": SURFACES INDICATED ARE TO BE STRAIGHT AND TRUE; FINISH IF NECESSARY.

ALL DIMENSIONS GIVEN THUS: 1.46 ARE DECIMALS OF AN INCH.

FOR NOTES AND REFERENCE, SEE DRAWING D-1001-1A.

MATERIAL TO BE ASTM A588 (U.N.)

SHOP NOTE

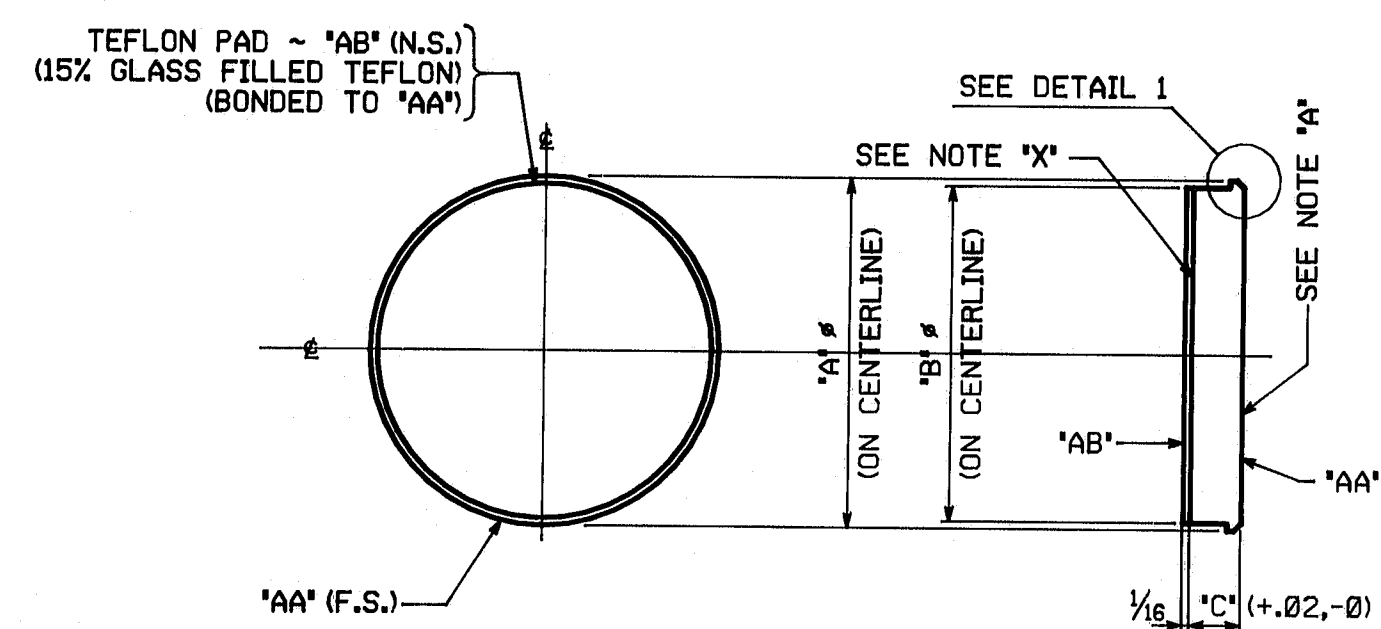
HOLES: AS NOTED

BOLTS: NONE

R95-154

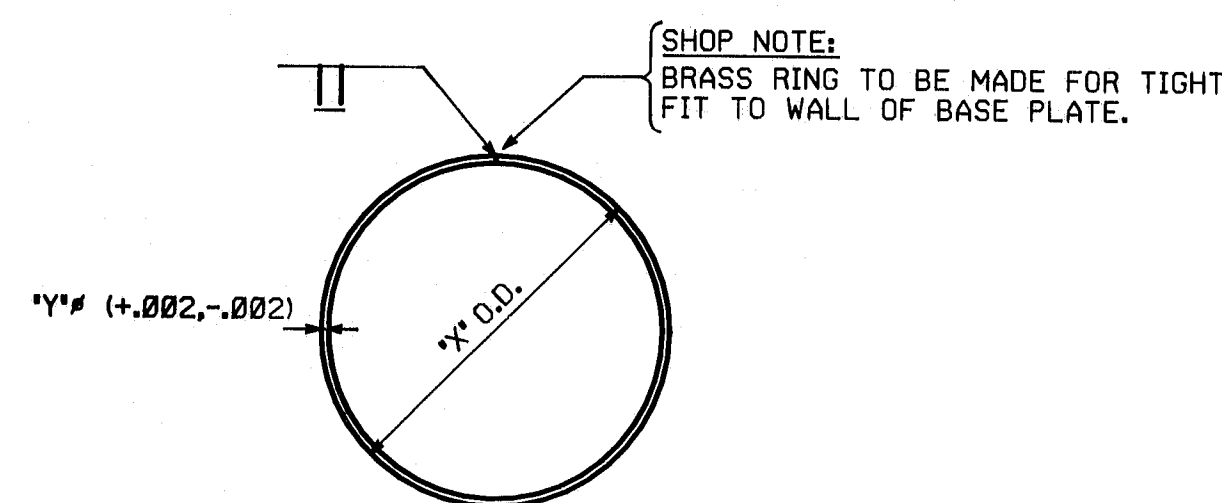
NO. 1	REVISION	REV. DATE	DATE
NO. 1	REVISION	DATE	DATE
HIGH STEEL STRUCTURES, INC. 1905 Old Philadelphia Pike Lancaster, Pennsylvania 17603 Phone 717/299-528 A Subsidiary of High Industries, Inc.			
POT BEARING DETAILS			
I-395 BRIDGE OVER PENOBSCOT RIVER			
I-395 BRIDGE STA. 164+60.00			
PENOBSCOT COUNTY			
STATE OF MAINE			
DEPARTMENT OF TRANSPORTATION			
STATE CONTRACT OR REF. NO.	6	CONTRACTOR	CIANBRO CORP.
IN CHARGE	HINKLE	MADE BY	B.J.K.
DATE	7-2-84	DATE	7-2-84
CONTRACT NUMBER	ME-84088-1,2,3	DRAWING NUMBER	D-1001-1B

DETAIL 1



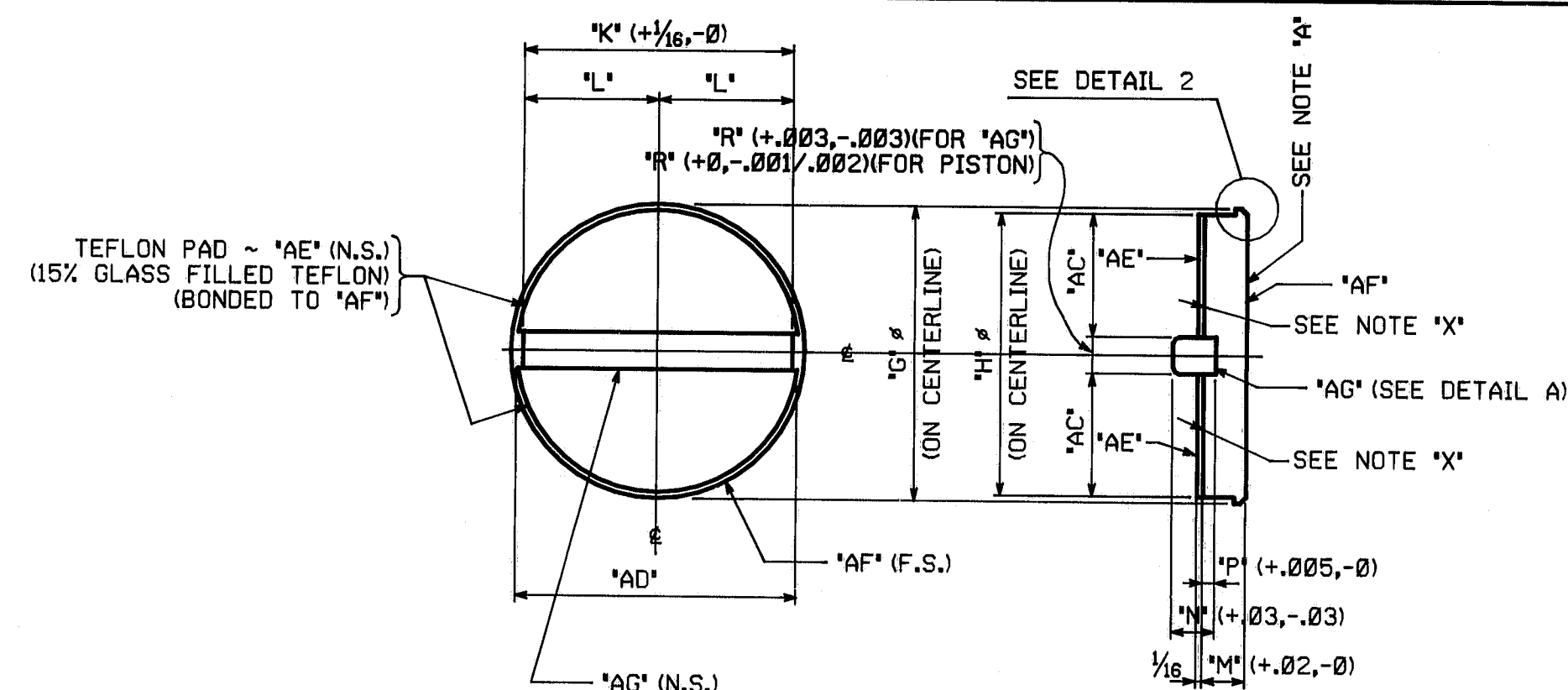
PISTONS - NON GUIDED

LOCATION	GIRDER	BRG. TYPE	'A' Δ	'B' Δ	'C' Δ	'D' Δ	'E' Δ	'F' Δ	'AA' Δ	'AB' Δ
PIER 2 SPAN 2	12.35 6.63.10	N-350(2)	10.72 (+0, -.008)	10.58	1.33	.07	.13	.37	ba	bk
ABUT. 1	12.35 6.63.10	N-400(2)	11.87 (+0, -.009)	11.71	1.36	.08	.13	.37	bb	bm
ABUT. 2	12.35 6.63.10	N-400(7)	11.87 (+0, -.009)	11.71	1.36	.08	.13	.37	bb	bm
PIER 6	12.35 6.63.10	N-600(9)	14.07 (+0, -.010)	13.91	1.46	.08	.14	.37	bc	bn
PIER 7	12.35 6.63.10	N-1000(3)	19.04 (+0, -.012)	18.84	1.77	.10	.18	.50	bd	bp
PIER 4	12.35 6.63.10	N-1500(3)	23.27 (+0, -.012)	23.05	2.04	.11	.24	.56	bg	bt
PIER 3	12.35 6.63.10	N-1800(7)	25.58 (+0, -.012)	25.36	2.14	.11	.27	.56	bh	bw



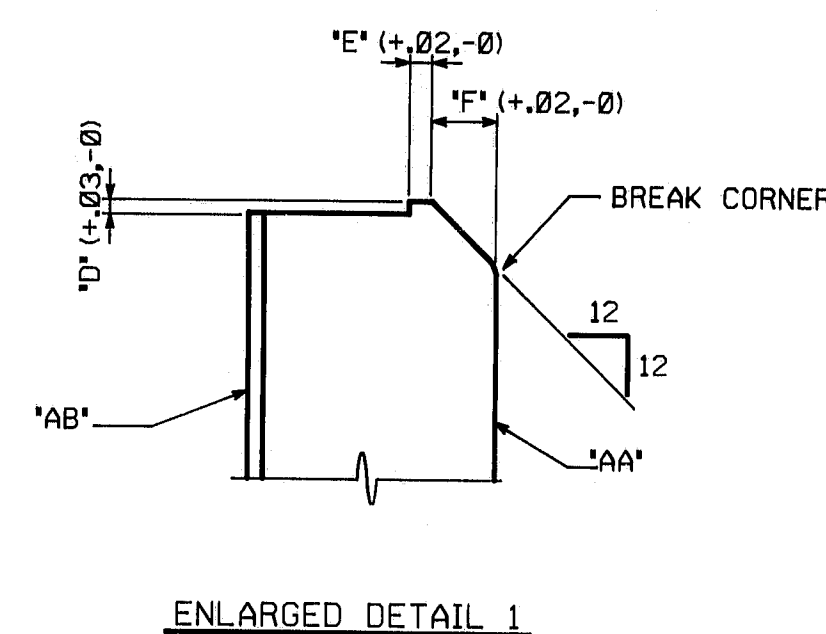
BRASS SEALING RINGS

LOCATION	GIRDER	BRG. TYPE	'X' Δ	'Y' Δ
PIER 2 SPAN 2	12.35 6.63.10	N-350(2)	10.74	5/16
ABUT. 1	12.35 6.63.10	N-400(2)	11.89	5/16
ABUT. 2	12.35 6.63.10	N-400(7)	11.89	5/16
ABUT. 1	12.35 6.63.10	N-400(2)	11.89	5/16
ABUT. 2	12.35 6.63.10	N-400(7)	11.89	5/16
PIER 2 SPAN 3	12.35 6.63.10	N-600(9)	14.11	5/16
PIER 1	12.35 6.63.10	N-900(2)	18.48	3/8
PIER 6	12.35 6.63.10	N-1000(3)	19.09	3/8
PIER 5	12.35 6.63.10	N-1100(5)	20.16	3/8
PIER 7	12.35 6.63.10	N-1100(5)	20.16	3/8
PIER 5	12.35 6.63.10	N-1100(2)	20.16	3/8
PIER 4	12.35 6.63.10	N-1500(3)	23.32	1/2
PIER 3	12.35 6.63.10	N-1800(7)	25.63	1/2

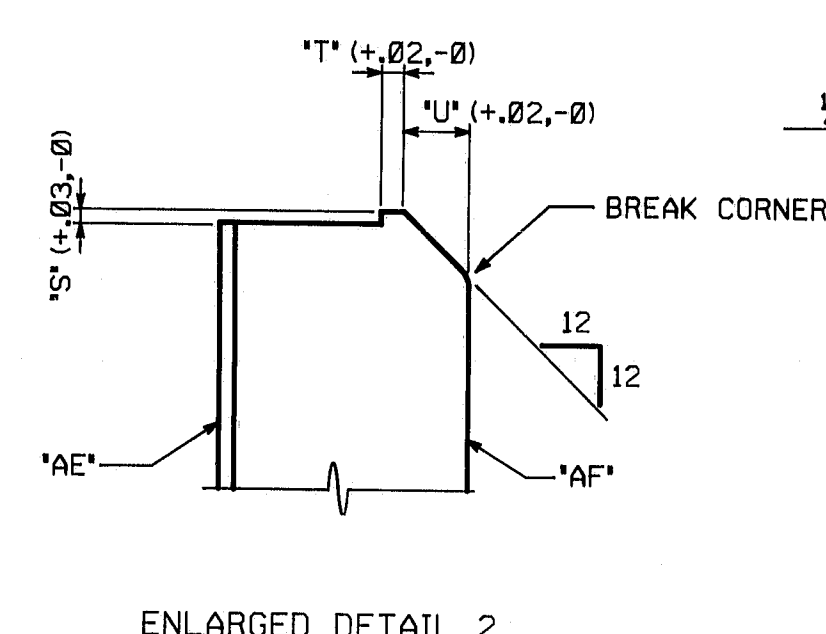


PISTONS - GUIDED

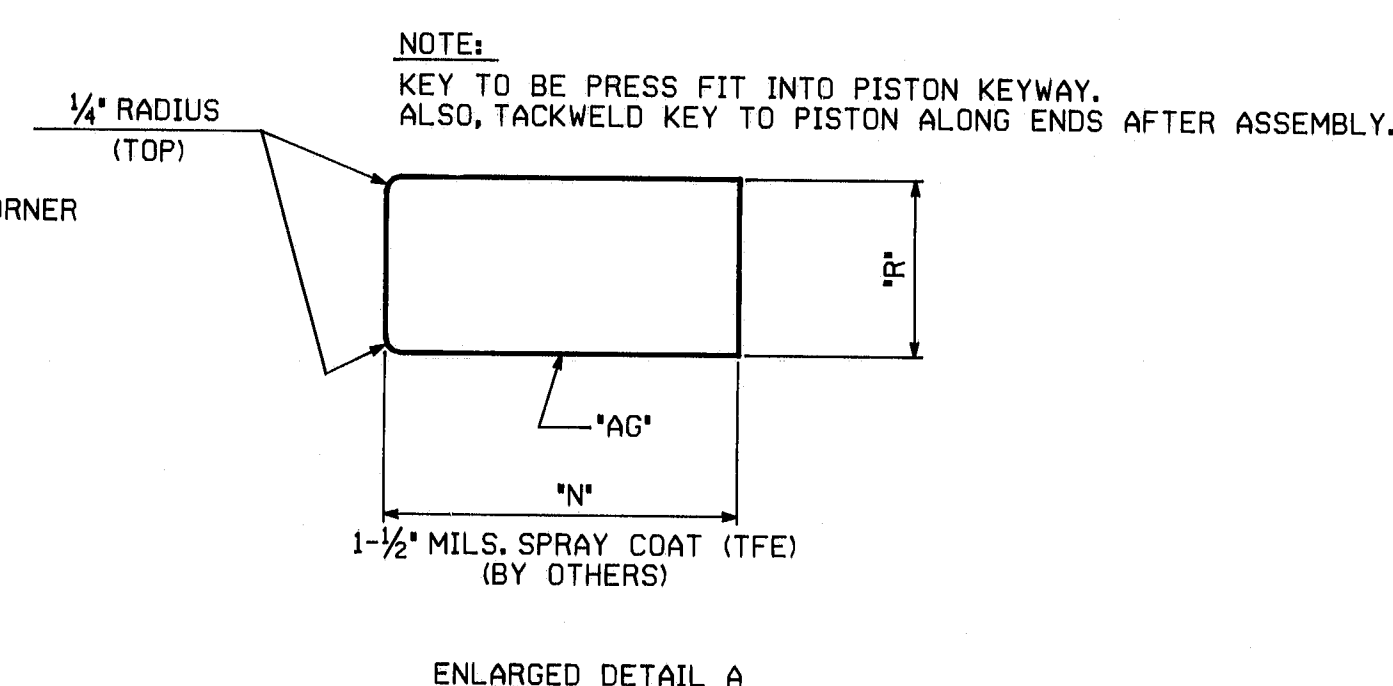
LOCATION	GIRDER	BRG. TYPE	'G' Δ	'H' Δ	'K' Δ	'L' Δ	'M' Δ	'N' Δ	'P' Δ	'R' Δ	'S' Δ	'T' Δ	'U' Δ	'AC' Δ	'AD' Δ	'AE' Δ	'AF' Δ	'AG' Δ
PIER 2 SPAN 2	4,7	G-350(2)	10.72 (+0, -.008)	10.58	10 1/16	5 1/2	1.33	1'	.37	.500	.07	.13	.37	5.04	10.5682	by	bak	bba
ABUT. 1	4,7	G-400(2)	11.87 (+0, -.009)	11.71	11 1/16	5 1/2	1.36	1'	.37	.500	.08	.13	.37	5.605	11.6993	baa	bam	bbb
ABUT. 2	4,5	G-400(7)	11.87 (+0, -.009)	11.71	11 1/16	5 1/2	1.36	1'	.37	.500	.08	.13	.37	5.605	11.6993	baa	bam	bbb
PIER 1	12.35 6.63.10	G-900(2)	18.43 (+0, -.010)	18.25	1'-5 1/8	8 1/16	1.73	1 1/4	.45	.750	.09	.17	.50	8.75	18.2346	bac	bap	bba
PIER 6	4,5	G-1000(3)	19.04 (+0, -.012)	18.84	1'-6 1/4	9 1/8	1.77	1 1/4	.45	.750	.10	.18	.50	9.045	18.8251	bad	bas	bbf
PIER 7	4,5	G-1100(5)	20.11 (+0, -.012)	19.91	1'-7 3/8	9 1/2	1.83	1 1/2	.55	1.000	.10	.21	.50	9.455	19.8849	baf	bat	bbg
PIER 5	12.35 6.63.10	G-1100(2)	20.11 (+0, -.012)	19.91	1'-7 3/8	9 1/2	1.83	1 1/2	.55	1.000	.10	.21	.50	9.455	19.8849	baf	bat	bbg
PIER 4	4,5	G-1500(3)	23.27 (+0, -.012)	23.05	1'-10 1/8	11 3/8	2.04	1 1/2	.55	1.000	.11	.24	.56	11.025	23.0283	bog	baw	bhh
PIER 3	4,5	G-1800(7)	25.58 (+0, -.012)	25.36	2'-0 3/4	1'-0 3/8	2.14	1 3/4	.68	1.000	.11	.27	.56	12.18	25.3403	bah	bay	bbk



ENLARGED DETAIL 1



ENLARGED DETAIL 2



ENLARGED DETAIL A

NOTES:

NOTE 'A': SURFACES INDICATED ARE TO BE STRAIGHT AND TRUE; FINISH IF NECESSARY.

NOTE 'X': SURFACES INDICATED ARE TO BE MACHINED FLAT TO .01'/.04' MAXIMUM

ALL DIMENSIONS GIVEN THUS: 12.21 ARE DECIMALS OF AN INCH. FOR NOTES AND REFERENCE, SEE DRAWING D-1001-1A. MATERIAL TO BE ASTM A588 (U.N.)

SHOP NOTE

HOLES: NONE

BOLTS: NONE

REQUIRED PER SHIPMENT	NO.	BRG. TYPE #	DESCRIPTION	LENGTH	REMARKS	ITEM	SHIP WEIGHT
10	--	10	350	ROD 5/16"	2 8 3/4	HALF-HARD BRASS ROD PER 00826 COMP. 22	10 31
10	--	8	18	400	ROD 5/16"	3 0 7/8	10 30
--	8	--	8	600	ROD 5/16"	3 7 3/4	10 29
10	--	--	10	900	ROD 3/8"	4 8 7/8	10 28
--	--	8	8	1000	ROD 3/8"	4 10 1/2	10 27
--	--	16	16	1100	ROD 3/8"	5 2 3/8	10 26
--	8	--	8	1500	ROD 1/2"	5 11 1/8	10 25
--	8	--	8	1800	ROD 1/2"	6 6 1/8	10 24

BILL OF MATERIAL

REQUIRED PER SHIPMENT	NO.	MARK	DESCRIPTION	LENGTH	REMARKS	ITEM	SHIP WEIGHT
8	--	--	8	ba	10.72" x 1.33" THK.	FOR BRG. TYPE 350	10 30
8	--	6	14	bb	11.87" x 1.36" THK.	FOR BRG. TYPE 400	10 29
--	6	--	6	bc	14.07" x 1.46" THK.	FOR BRG. TYPE 600	10 28
--	6	--	6	bd	19.04" x 1.77" THK.	FOR BRG. TYPE 1000	10 26
--	6	--	6	bf	20.11" x 1.83" THK.	FOR BRG. TYPE 1100	10 25
--	6	--	6	bg	23.27" x 2.04" THK.	FOR BRG. TYPE 1500	10 24
--	6	--	6	bh	25.58" x 2.14" THK.	FOR BRG. TYPE 1800	10 23
8	--	--	8	bm	10.56" x 1/16" THK.	ISOGLOSS FILL TEFLON FOR BRG. TYPE 350	10 31
--	6	--	6	bn	11.71" x 1/16" THK.	ISOGLOSS FILL TEFLON FOR BRG. TYPE 400	10 30
--	6	--	6	bp	13.91" x 1/16" THK.	ISOGLOSS FILL TEFLON FOR BRG. TYPE 600	10 29
--	6	--	6	bs	18.84" x 1/16" THK.	ISOGLOSS FILL TEFLON FOR BRG. TYPE 1000	10 27
--	6	--	6	bt	19.91" x 1/16" THK.	ISOGLOSS FILL TEFLON FOR BRG. TYPE 1100	10 26
--	6	--	6	bw	23.05" x 1/16" THK.	ISOGLOSS FILL TEFLON FOR BRG. TYPE 1500	10 25
--	6	--	6	bx	25.36" x 1/16" THK.	ISOGLOSS FILL TEFLON FOR BRG. TYPE 1800	10 24

BILL OF MATERIAL

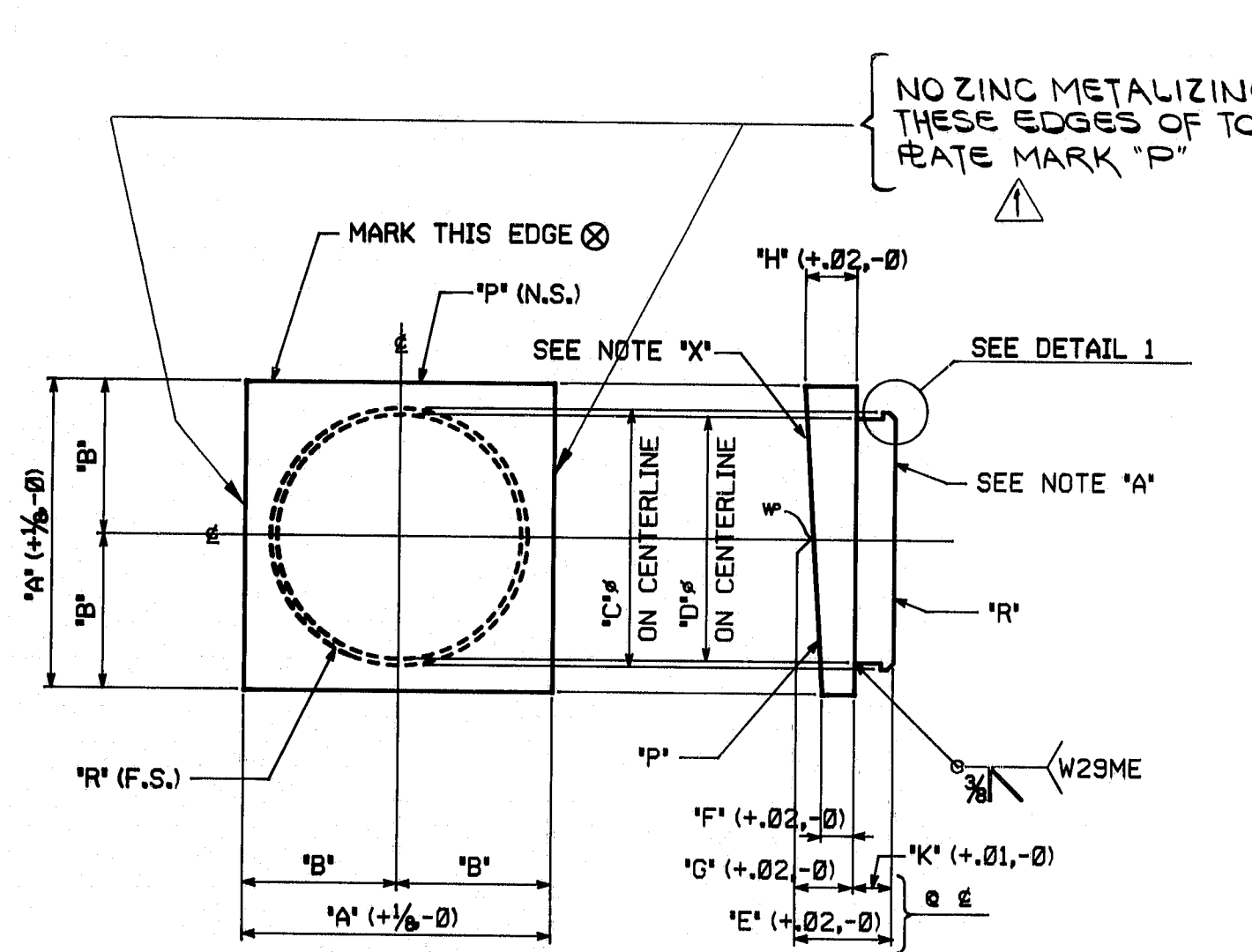
REQUIRED PER SHIPMENT	NO.	MARK	DESCRIPTION	LENGTH	REMARKS	ITEM	SHIP WEIGHT
2	--	--	2	bak	10.72" x 1.33" THK.	FOR BRG. TYPE 350	10 30
2	--	2	4	bam	11.87" x 1.36" THK.	FOR BRG. TYPE 400	10 29
--	2	--	2	ban	14.07" x 1.46" THK.	FOR BRG. TYPE 600	10 28
8	--	--	8	bap	19.04" x 1.77" THK.	FOR BRG. TYPE 1000	10 26
--	2	2	2	bas	20.11" x 1.83" THK.	FOR BRG. TYPE 1100	10 25
--	8	--	8	bat	23.27" x 2.04" THK.	FOR BRG. TYPE 1500	10 24
--	2	--	2	baw	25.58" x 2.14" THK.	FOR BRG. TYPE 1800	10 23
2	--	--	2	bba	10.56" x 1/16" THK.	FOR BRG. TYPE 350 COLD DRAWN (C101)	10 31
2	--	2	4	bbb	11.71" x 1/16" THK.	FOR BRG. TYPE 400 COLD DRAWN (C101)	10 30
--	2	--	2	bbc	13.91" x 1/16" THK.	FOR BRG. TYPE 600 COLD DRAWN (C101)	10 29
8	--	--	8	bbd	18.84" x 1/16" THK.	FOR BRG. TYPE 1000 COLD DRAWN (C101)	10 27
--	2	--	2	bbe	19.91" x 1/16" THK.	FOR BRG. TYPE 1100 COLD DRAWN (C101)	10 26
--	8	--	8	baf	23.05" x 1/16" THK.	FOR BRG. TYPE 1500 COLD DRAWN (C101)	10 25
--	2	--	2	bah	25.34" x 1/16" THK.	FOR BRG. TYPE 1800 COLD DRAWN (C101)	10 24
4	--	--	4	by	10.56" x 1/16" x 10.5682	ISOGLOSS FILL TEFLON FOR BRG. TYPE 350	10 31
4	--	4	8	baa	11.6993" x 1/16" x 11.6993	ISOGLOSS FILL TEFLON FOR BRG. TYPE 400	10 30
--	4	--	4	bab	13.8898" x 1/16" x 13.8898	ISOGLOSS FILL TEFLON FOR BRG. TYPE 600	10 28
16	--	--	16	bac	18.2346" x 1/16" x 18.2346	ISOGLOSS FILL TEFLON FOR BRG. TYPE 1000	10 26
--	4	--	4	baf	19.8849" x 1/16" x 19.8849	ISOGLOSS FILL TEFLON FOR BRG. TYPE 1100	10 25
--	16	--	16	bap	23.0283" x 1/16" x 23.0283	ISOGLOSS FILL TEFLON FOR BRG. TYPE 1500	10 24
--	4	--	4	bah	25.3403" x 1/16" x 25.3403	ISOGLOSS FILL TEFLON FOR BRG. TYPE 1800	10 23

△

NO. Δ	REVISION	DATE	9-28-84
HIGH STEEL STRUCTURES, INC.			
POT BEARING DETAILS			
I-395 BRIDGE OVER PENOBSCOT RIVER			
I-395 BRIDGE STA. 164+60.00			
PENOBSCOT COUNTY			
STATE OF MAINE			
DEPARTMENT OF TRANSPORTATION			
STATE CONTRACT OR REF. NO.	6	CONTRACTOR	CIANBRO CORP.
IN CHARGE	HINKLE	MADE BY	B.J.K.
CHK.D. BY	JCH	DATE	7-2-84
CONTRACT NUMBER	ME-84088-1,2,3	DRAWING NUMBER	D-1001-1C

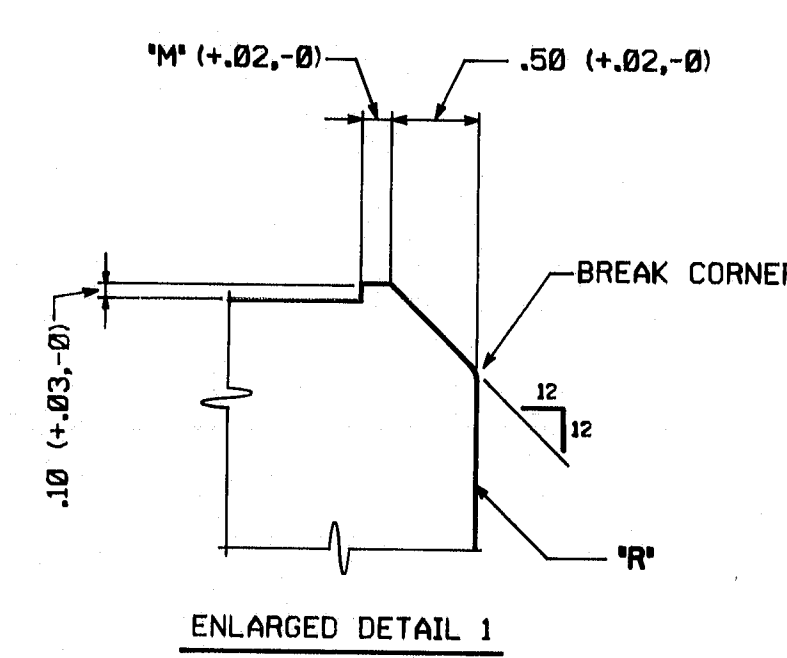
R95-155

CODE:6000



SOLE PLATE/PISTON PLATE - FIXED

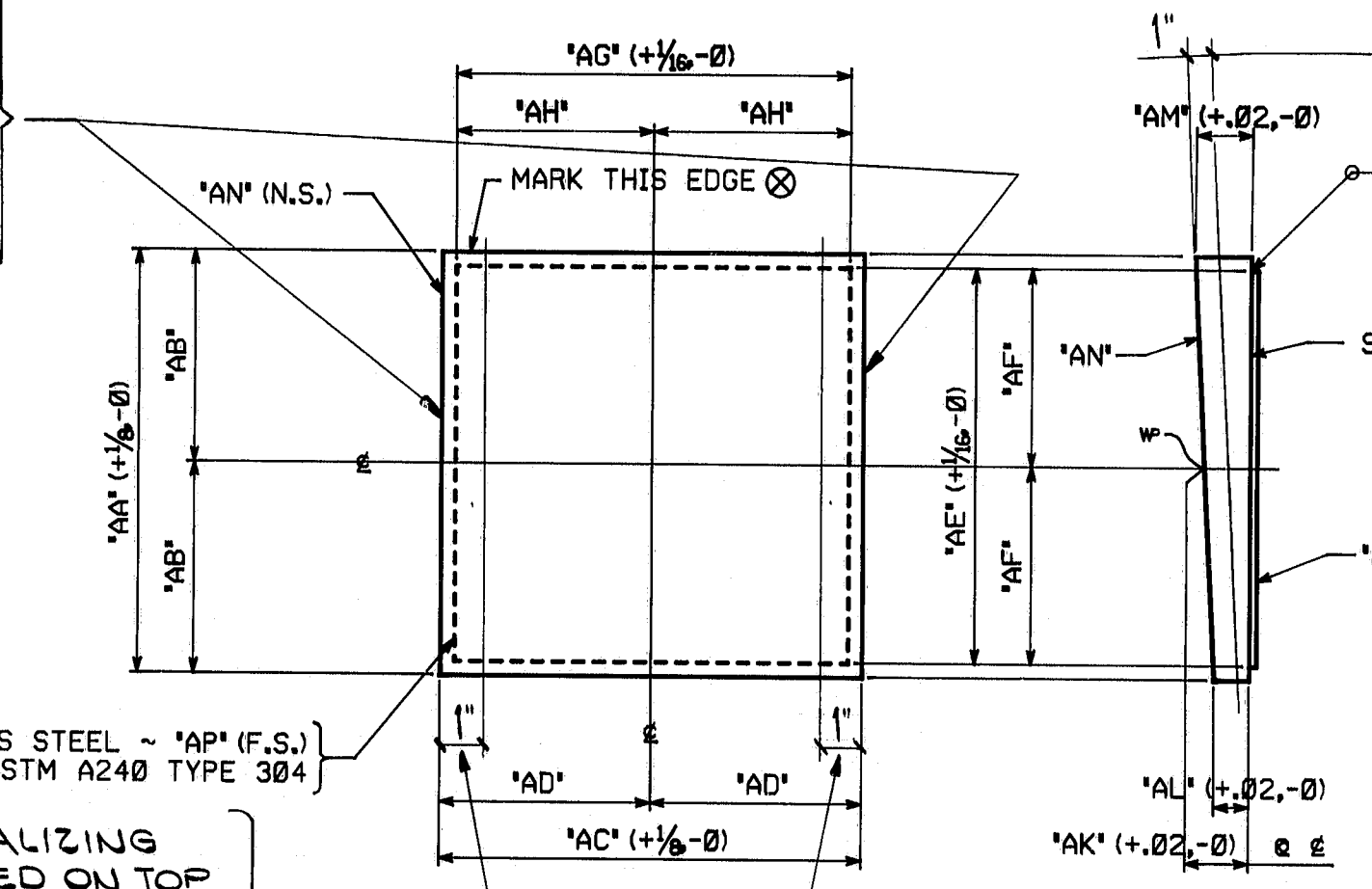
LOCATION	GIRDER	BRG. TYPE	'A'	'B'	'C'	'D'	'E'	'F'	'G'	'H'	'I'	'J'	'K'	'L'	'M'	'N'	'O'	'P'	'Q'	'R'
PIER 1	4	F-900	1'-10 1/2"	11 1/8"	18.43 (+0, -.010)	18.23	2.95	.97	1.22	1.47	1.73	.17	bbm	bbm						
	7	F-900	1'-10 1/2"	11 1/8"	18.43 (+0, -.010)	18.23	2.95	.95	1.22	1.49	1.73	.17	bbm	bbm						
PIER 5	4,5	F1100	2'-1 1/2"	1'-0 1/2"	20.11 (+0, -.012)	19.91	3.05	1.04	1.22	1.40	1.83	.21	bbp	bbt						



ENLARGED DETAIL 1

NO ZINC METALIZING THESE EDGES OF TOP PLATE MARK 'AN' FOR ALL BRGS. TYPE 350(2) & 400(2)

NO ZINC METALIZING THESE EDGES OF TOP PLATE MARK 'AN' FOR 1" AS SHOWN IN SIDE VIEW FOR ALL BRGS. TYPE 1500(5); 1800(7) & 400(7)



SOLE PLATES - NON GUIDED

STAINLESS STEEL - 'AP' (F.S.)
MIRROR FINISH - ASTM A240 TYPE 304

NO ZINC METALIZING FOR 1" AS NOTED ON TOP PLATE MARK 'AN' FOR ALL BRGS. TYPE 1000(5) & 1100(5)

LOCATION	GIRDER	BRG. TYPE	'AA'	'AB'	'AC'	'AD'	'AE'	'AF'	'AG'	'AH'	'AI'	'AJ'	'AK'	'AL'	'AM'	'AN'	'AP'
PIER 2 SPAN 2	1	N-350(2)	1'-3 3/4"	7 7/8"	1'-2 3/4"	7 7/8"	1'-3 3/4"	7 7/8"	1'-2 3/4"	7 7/8"	1'-2 3/4"	7 7/8"	1'-2 3/4"	7 7/8"	1'-2 3/4"	7 7/8"	1'-2 3/4"
	2	N-350(2)															
	3,6	N-350(2)															
ABUT. 1	5,8,9,10	N-350(2)	1'-3 3/4"	7 7/8"	1'-2 3/4"	7 7/8"	1'-3 3/4"	7 7/8"	1'-2 3/4"	7 7/8"	1'-2 3/4"	7 7/8"	1'-2 3/4"	7 7/8"	1'-2 3/4"	7 7/8"	1'-2 3/4"
	1	N-400(2)	1'-4 1/2"	8 1/2"	1'-3 3/4"	7 7/8"	1'-4 1/2"	8 1/2"	1'-3 3/4"	7 7/8"	1'-4 1/2"	8 1/2"	1'-3 3/4"	7 7/8"	1'-4 1/2"	8 1/2"	1'-3 3/4"
	3,5	N-400(2)															
ABUT. 2	2,8,9,10	N-400(2)	1'-4 1/2"	8 1/2"	1'-3 3/4"	7 7/8"	1'-4 1/2"	8 1/2"	1'-3 3/4"	7 7/8"	1'-4 1/2"	8 1/2"	1'-3 3/4"	7 7/8"	1'-4 1/2"	8 1/2"	1'-3 3/4"
	1	N-400(7)	1'-9 1/2"	10 1/2"	1'-4 1/2"	8 1/2"	1'-9 1/2"	10 1/2"	1'-4 1/2"	8 1/2"	1'-9 1/2"	10 1/2"	1'-4 1/2"	8 1/2"	1'-9 1/2"	10 1/2"	1'-4 1/2"
	2,3,6,7,8	N-400(7)	1'-9 1/2"	10 1/2"	1'-4 1/2"	8 1/2"	1'-9 1/2"	10 1/2"	1'-4 1/2"	8 1/2"	1'-9 1/2"	10 1/2"	1'-4 1/2"	8 1/2"	1'-9 1/2"	10 1/2"	1'-4 1/2"
PIER 6	1,2,3,6,7,8	N-1000(3)	2'-1"	1'-0 1/2"	2'-1 1/2"	1'-0 1/2"	2'-1"	1'-0 1/2"	2'-1 1/2"	1'-0 1/2"	2'-1"	1'-0 1/2"	2'-1 1/2"	1'-0 1/2"	2'-1"	1'-0 1/2"	2'-1 1/2"
	1,2,3,6	N-1100(5)	2'-4 1/2"	1'-2 3/4"	2'-1 1/2"	1'-0 1/2"	2'-4 1/2"	1'-2 3/4"	2'-1 1/2"	1'-0 1/2"	2'-4 1/2"	1'-2 3/4"	2'-1 1/2"	1'-0 1/2"	2'-4 1/2"	1'-2 3/4"	2'-1 1/2"
	7,8	N-1100(5)	2'-4 1/2"	1'-2 3/4"	2'-1 1/2"	1'-0 1/2"	2'-4 1/2"	1'-2 3/4"	2'-1 1/2"	1'-0 1/2"	2'-4 1/2"	1'-2 3/4"	2'-1 1/2"	1'-0 1/2"	2'-4 1/2"	1'-2 3/4"	2'-1 1/2"
PIER 7	1	N-1500(3)	2'-6 1/4"	1'-3 3/4"	2'-5 1/4"	1'-2 3/4"	2'-6 1/4"	1'-3 3/4"	2'-5 1/4"	1'-2 3/4"	2'-6 1/4"	1'-3 3/4"	2'-5 1/4"	1'-2 3/4"	2'-6 1/4"	1'-3 3/4"	2'-5 1/4"
	2,3	N-1500(3)															
	6	N-1500(3)															
PIER 4	7	N-1500(3)															
	8	N-1500(3)	2'-6 1/4"	1'-3 3/4"	2'-5 1/4"	1'-2 3/4"	2'-6 1/4"	1'-3 3/4"	2'-5 1/4"	1'-2 3/4"	2'-6 1/4"	1'-3 3/4"	2'-5 1/4"	1'-2 3/4"	2'-6 1/4"	1'-3 3/4"	2'-5 1/4"
	1	N-1800(7)	3'-1"	1'-6 1/2"	2'-9"	1'-4 1/2"	3'-0 1/2"	1'-6 1/2"	2'-9"	1'-4 1/2"	3'-0 1/2"	1'-6 1/2"	2'-9"	1'-4 1/2"	3'-0 1/2"	1'-6 1/2"	2'-9"
PIER 3	2	N-1800(7)															
	3	N-1800(7)															
	6	N-1800(7)															
PIER 5	7	N-1800(7)															
	8	N-1800(7)	3'-1"	1'-6 1/2"	2'-9"	1'-4 1/2"	3'-0 1/2"	1'-6 1/2"	2'-9"	1'-4 1/2"	3'-0 1/2"	1'-6 1/2"	2'-9"	1'-4 1/2"	3'-0 1/2"	1'-6 1/2"	2'-9"
	1	N-1800(7)															

NOTES:

NOTE 'A' SURFACES INDICATED ARE TO BE STRAIGHT AND TRUE; FINISH IF NECESSARY.

NOTE 'X' SURFACES INDICATED ARE TO BE MACHINED FLAT TO .01"/FT. (0.04" MAXIMUM)

ALL DIMENSIONS GIVEN THUS: 2.95 ARE DECIMALS OF AN INCH. FOR NOTES AND REFERENCE, SEE DRAWING D-1001-1A.

MATERIAL TO BE ASTM A588 (U.N.)

SHOP NOTE

HOLES: NONE

BOLTS: NONE

REQUIRED PER SHIPMENT			BILL OF MATERIAL										FED. ROAD DIV. NO.		STATE		FED. ROAD PROJ. NO.	
#1	#2	#3	NO.	MARK	DESCRIPTION	LENGTH	REMARKS	ITEM	QTY	UNIT	WEIGHT	PRICE	1	ME.	1	ME.	1	ME.
SOLE PLATE/PISTON PLATE - FIXED																		
1	--	--	1	bbm	222 1/2" x 1.47 x .375	1	10%	FOR BRG. TYPE 900	18	24								
1	--	--	1	bbn	222 1/2" x 1.49 x .351	1	10%	FOR BRG. TYPE 900	18	24								
--	--	2	2	bbp	225 1/2" x 1.48 x 1.04	2	1%	FOR BRG. TYPE 1100	18	27								
2	--	--	2	bbs	218.43 " x 1.73 THK.			FOR BRG. TYPE 900	18	27								
--	--	2	2	bbt	220.11 " x 1.83 THK.			FOR BRG. TYPE 1100	18	25								
SOLE PLATES - NON GUIDED																		
1	--	--	1	bbw	214 1/2" x 1.46 x 1.04	1	3%	FOR BRG. TYPE 350	18	26								
1	--	--	1	bbx	214 1/2" x 1.45 x 1.05	1	3%	FOR BRG. TYPE 350	18	26								
2	--	--	2	bca	214 1/2" x 1.43 x 1.07	1	3%	FOR BRG. TYPE 350	18	26								
4	--	--	4	ccb	214 1/2" x 1.42 x 1.08	1	3%	FOR BRG. TYPE 350	18	26								
1	--	--	1	bcc	215 1/2" x 1.45 x 1.00	1	4%	FOR BRG. TYPE 400	18	25								
2	--	--	2	bcd	215 1/2" x 1.43 x 1.03	1	4%	FOR BRG. TYPE 400	18	25								
1	--	--	1	bce	215 1/2" x 1.42 x 1.04	1	4%	FOR BRG. TYPE 400	18	25								
4	--	--	4	bcd	215 1/2" x 1.45 x 1.01	1	4%	FOR BRG. TYPE 400	18	25								
--	--	1	1	bch	216 1/2" x 1.36 x 1.36	1	9%	FOR BRG. TYPE 400	18	23								
--	--	5	5	bck	216 1/2" x 1.37 x 1.35	1	9%	FOR BRG. TYPE 400	18	23								
--	--	6	6	bcy	225 1/2" x 2.21 x 1.61	2	1	FOR BRG. TYPE 1000	18	18								
--	--	4	4	bda	225 1/2" x 2.45 x 1.65	2	4%	FOR BRG. TYPE 1100	18	14								
--	--	2	2	bdb	225 1/2" x 2.46 x 1.64	2	4%	FOR BRG. TYPE 1100	18	14								
--	--	1	1	bdc	229 1/2" x 2.11 x 2.07	2	6 1/2	FOR BRG. TYPE 1500	18	21								
--	--	2	2	bdd	229 1/2" x 2.09 x 2.09	2	6 1/2	FOR BRG. TYPE 1500	18	21								
--	--	1	1	bdf	229 1/2" x 2.15 x 2.03	2	6 1/2	FOR BRG. TYPE 1500	18	21								
--	--	1	1	bdg	229 1/2" x 2.16 x 2.00	2	6 1/2	FOR BRG. TYPE 1500	18	16								
--	--	1	1	bde	229 1/2" x 2.21 x 1.97	2	6 1/2	FOR BRG. TYPE 1500	18	16								
--	--	1	1	bdk	233 1/2" x 2.45 x 2.11	3	1	FOR BRG. TYPE 1800	18	13								
--	--	1	1	bdl	233 1/2" x 2.43 x 2.13	3	1	FOR BRG. TYPE 1800	18	13								
--	--	1	1	bdl	233 1/2" x 2.41 x 2.15	3	1	FOR BRG. TYPE 1800	18	13								
--	--	1	1	bdl	233 1/2" x 2.37 x 2.19	3	1	FOR BRG. TYPE 1800	18	15								
--	--	1	1	bds	233 1/2" x 2.35 x 2.21	3	1	FOR BRG. TYPE 1800	18	15								
--	--	1	1	bdt	233 1/2" x 2.34 x 2.22	3	1	FOR BRG. TYPE 1800	18	15								
8	--	--	8	bdw	214 1/2" x 14GA.	1	3 1/2	A240 TYPE 304 FOR BRG. TYPE 350	18	12								
8	--	--	8	bdu	215 1/2" x 14GA.	1	4 1/2	A240 TYPE 304 FOR BRG. TYPE 400	18	10								
--	--	6	6	bfa	215 1/2" x 14GA.	1	9 1/2	A240 TYPE 304 FOR BRG. TYPE 400	18	9								
--	--	6	6	bfc	223 1/2" x 14GA.	2	0 1/2	A240 TYPE 304 FOR BRG. TYPE 1000	18	6								
--	--	6	6	bfd	224 1/2" x 14GA.	2	3 1/2	A240 TYPE 304 FOR BRG. TYPE 1100	18	6								
--	--	6	6	bff	228 1/2" x 14GA.	2	5 1/2	A240 TYPE 304 FOR BRG. TYPE 1500	18	4								
--	--	6	6	bfg	231 1/2" x 14GA.	3	0 1/2	A240 TYPE 304 FOR BRG. TYPE 1800	18	3								

NO. 1 REVISION altered as per 10-11-84 appv. DATE 10-11-84

805 Old Philadelphia Pike
Lancaster, Pennsylvania 17603
Phone 717/299-3333

A Subsidiary of H&B Industries, Inc.

POT BEARING DETAILS

I-395 BRIDGE OVER PENOBSCOT RIVER

I-395 BRIDGE STA. 164+60.00

PENOBSCOT COUNTY

STATE OF MAINE

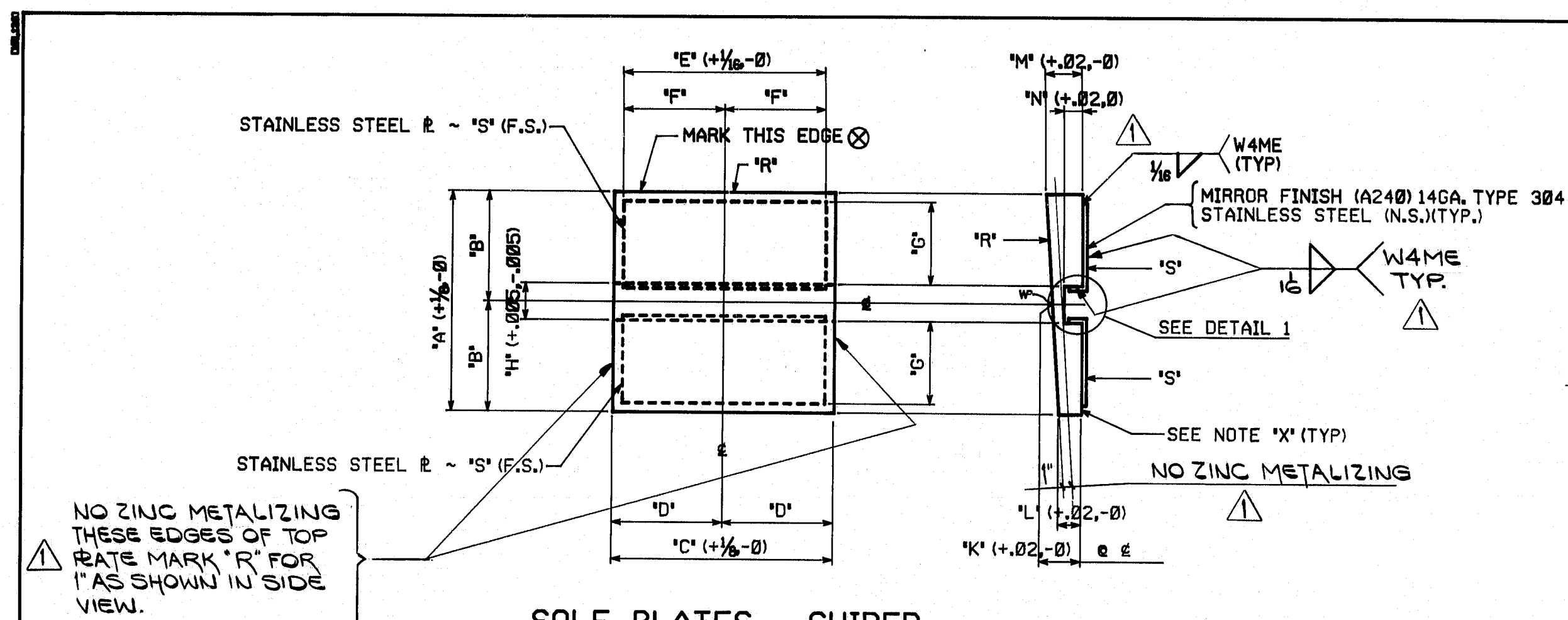
DEPARTMENT OF TRANSPORTATION

STATE CONTRACT OR REF. NO. 6 CONTRACTOR CIANBRO CORP.

IN CHARGE HINKLE MADE BY B.J.K. CHK'D BY JCH DATE 8-16-84

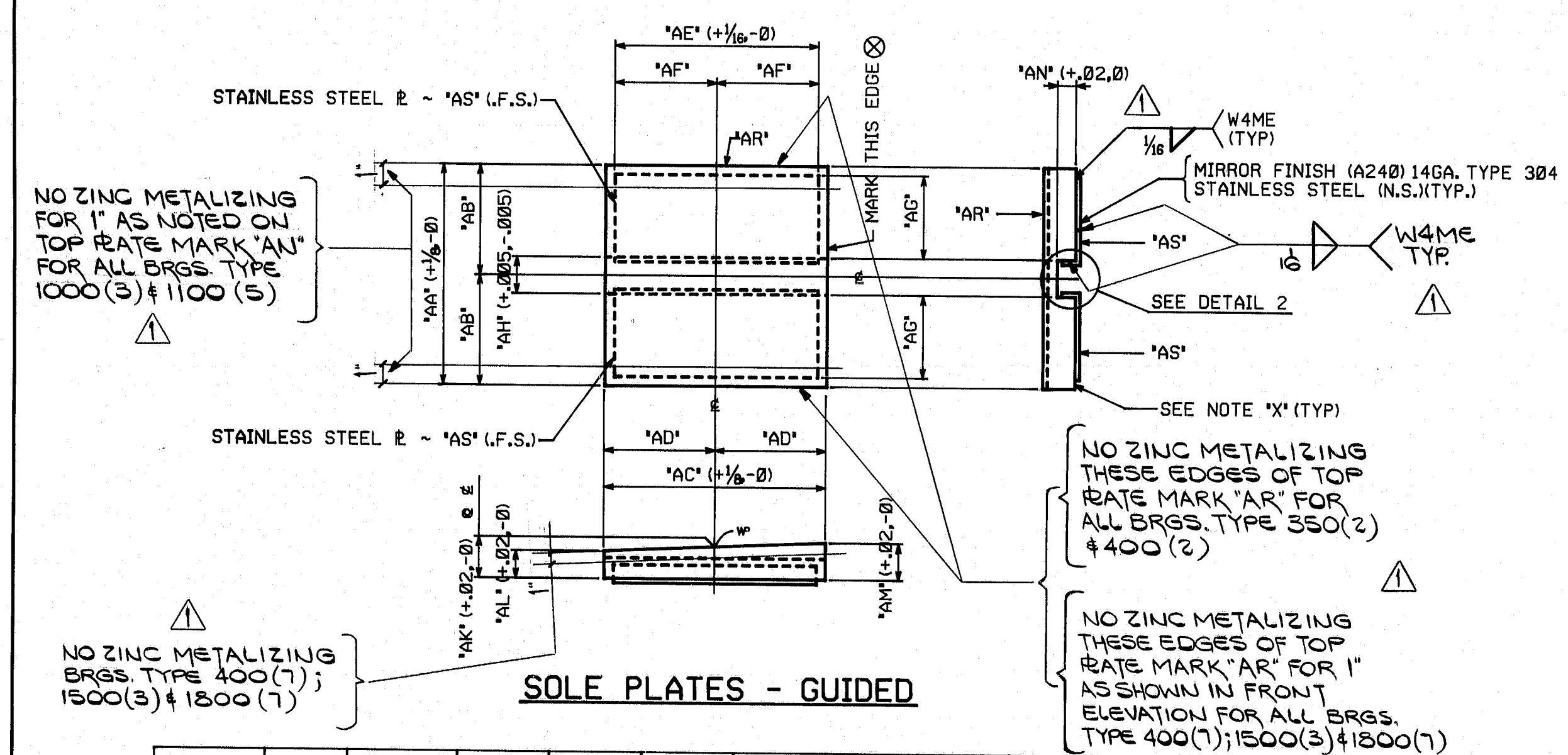
CONTRACT NUMBER ME-84088-1,2,3 DRAWING NUMBER D-1001-1D DATE 7-2-84

R95-156



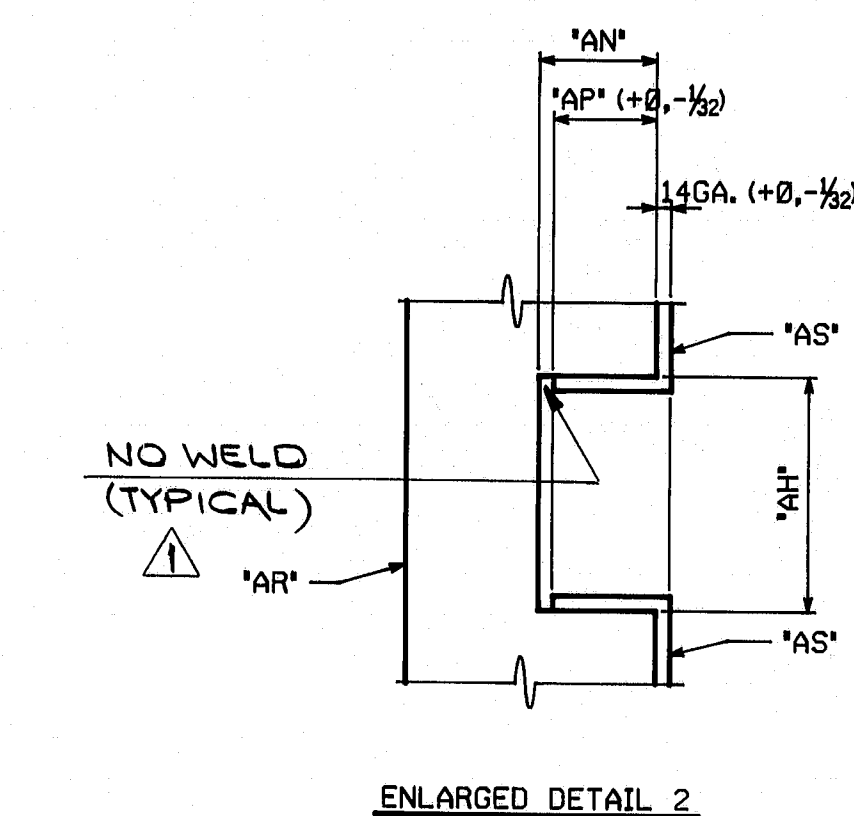
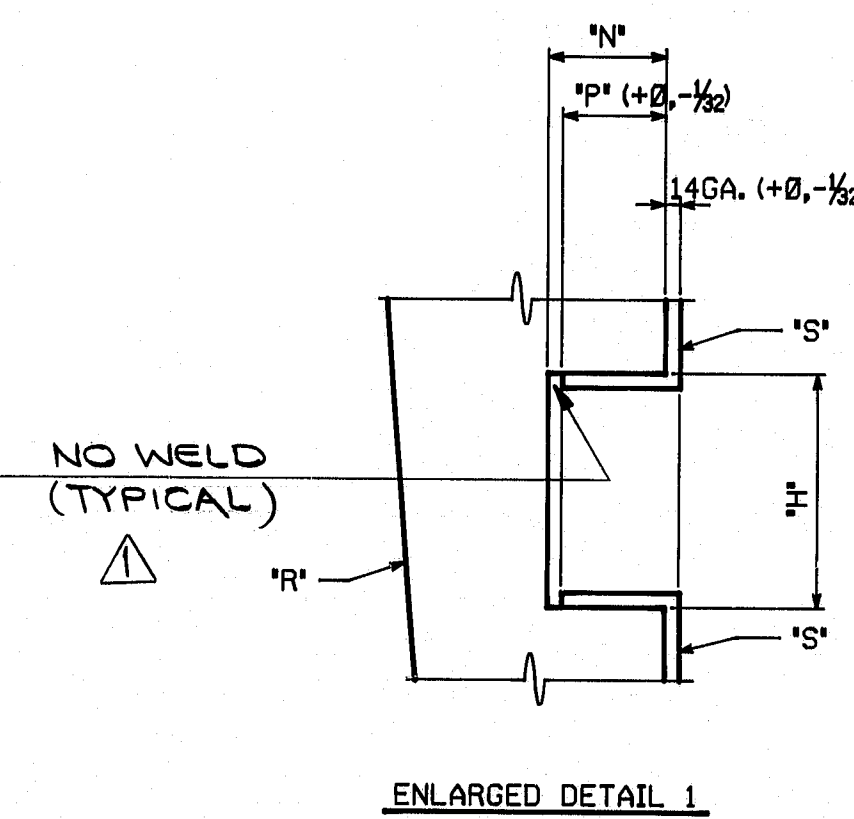
SOLE PLATES - GUIDED

LOCATION	GIRDER	BRG. TYPE	'A'	'B'	'C'	'D'	'E'	'F'	'G'	'H'	'I'	'J'	'K'	'L'	'M'	'N'	'P'	'R'	'S'
PIER 1	1	G-900(2)	1'-10 7/8	11 7/8	1'-11	11 1/2	1'-10 1/2	11 1/4	10 3/4	1.06	1.30	1.59	2.21	.75	%	bgb	bhc		
	2	G-900(2)													1.60	2.20		bgc	
	3,8,9,10	G-900(2)													1.63	2.17		bgd	
	5,6	G-900(2)	1'-10 7/8	11 7/8	1'-11	11 1/2	1'-10 1/2	11 1/4	10 3/4	1.06	1.30	1.61	2.19	.75	%	bgi	bhc		
PIER 5	1,2,3	G-1100(2)	2'-1 3/8	1'-0 1/8	2'-1 3/8	1'-0 1/8	2'-0 7/8	1'-0 7/8	11 1/8	1.31	2.01	1.86	2.16	.93	%	bgi	bhd		
	6	G-1100(2)													1.83	2.19		bgh	
	7	G-1100(2)													1.82	2.20		bgk	
	8	G-1100(2)	2'-1 3/8	1'-0 1/8	2'-1 3/8	1'-0 1/8	2'-0 7/8	1'-0 7/8	11 1/8	1.31	2.01	1.81	2.21	.93	%	bgm	bhd		



SOLE PLATES - GUIDED

LOCATION	GIRDER	BRG. TYPE	'AA'	'AB'	'AC'	'AD'	'AE'	'AF'	'AG'	'AH'	'AI'	'AJ'	'AK'	'AL'	'AM'	'AN'	'AP'	'AR'	'AS'
PIER 2	4,7	G-350(2)	1'-2 3/4	7 3/4	1'-3 3/4	7 3/4	1'-3 3/4	7 3/4	8 3/4	.81	1.25	1.07	1.43	.56	%	bfn	bgm		
ABUT. 1	4	G-400(2)	1'-3 3/4	7 3/4	1'-4 3/4	8 3/4	1'-4 3/4	8 3/4	7 3/4	.81	1.23	1.05	1.41	.56	%	bfn	bgp		
	7	G-400(2)	1'-3 3/4	7 3/4	1'-4 3/4	8 3/4	1'-4 3/4	8 3/4	7 3/4	.81	1.23	1.02	1.44	.56	%	bfn	bgp		
ABUT. 2	4,5	G-400(7)	1'-4 1/4	8 3/4	1'-9 3/4	10 3/4	1'-9 3/4	10 3/4	7 3/4	.81	1.66	1.35	1.97	.56	%	bfn	bgg		
PIER 6	4,5	G-1000(3)	2'-1 1/2	1'-0 1/4	2'-1	1'-0 1/2	2'-0 1/2	1'-0 1/4	11 1/4	1.06	1.91	1.61	2.21	.75	%	bfs	bgw		
PIER 7	4,5	G-1100(5)	2'-1 3/8	1'-0 1/8	2'-1 3/8	1'-0 1/8	2'-0 7/8	1'-0 7/8	11 1/8	1.31	2.05	1.65	2.45	.93	%	bfs	bgw		
PIER 4	4,5	G-1500(3)	2'-5 1/4	1'-2 3/4	2'-6 1/4	1'-3 3/4	2'-5 3/4	1'-2 3/4	1'-1 1/4	1.31	2.09	2.04	2.14	.93	%	bfs	bha		
PIER 3	4	G-1800(7)	2'-9	1'-4 1/2	3'-1	1'-6 1/2	3'-0 1/2	1'-6 1/4	1'-3 3/4	1.31	2.28	2.15	2.41	.93	%	bfs	bhb		
	5	G-1800(7)	2'-9	1'-4 1/2	3'-1	1'-6 1/2	3'-0 1/2	1'-6 1/4	1'-3 3/4	1.31	2.28	2.17	2.39	.93	%	bfs	bhb		



NOTES:

NOTE 'A': SURFACES INDICATED ARE TO BE STRAIGHT AND TRUE; FINISH IF NECESSARY.

NOTE 'X': SURFACES INDICATED ARE TO BE MACHINED FLAT TO .01"/FT. (0.4" MAXIMUM)

ALL DIMENSIONS GIVEN THUS: 2.21 ARE DECIMALS OF AN INCH. FOR NOTES AND REFERENCE, SEE DRAWING D-1001-1A. MATERIAL TO BE ASTM A588 (U.N.)

SHOP NOTE

HOLES: NONE
BOLTS: NONE

REQUIRED PER SHIPMENT		BILL OF MATERIAL		FED. ROAD DIV. NO.		STATE		FED. AID PROJ. NO.	
				1		ME.		I-10-395-8(82)176	
#1	#2	#3	NO.	MARK	DESCRIPTION	LENGTH	REMARKS	ITEM	WEIGHT
SOLE PLATES - GUIDED									
2	--	--	2	bfn	14 3/4 x (1.43 x 1.07)	1	3%	FOR BRG. TYPE 350	26
1	--	--	1	bfn	15 1/2 x (1.41 x 1.05)	1	4%	FOR BRG. TYPE 400	25
1	--	--	1	bfn	15 1/2 x (1.44 x 1.02)	1	4%	FOR BRG. TYPE 400	25
--	--	2	2	bfn	16 1/4 x (1.97 x 1.35)	1	9%	FOR BRG. TYPE 400	23
--	--	2	2	bfs	25 1/2 x (2.21 x 1.61)	2	1	FOR BRG. TYPE 1000	18
--	--	2	2	bft	25 1/2 x (2.45 x 1.65)	2	4%	FOR BRG. TYPE 1100	14
--	--	2	2	bft	29 1/4 x (2.14 x 2.04)	2	6%	FOR BRG. TYPE 1500	21
--	--	1	1	bft	33 x (2.41 x 2.15)	3	1	FOR BRG. TYPE 1800	13
--	--	1	1	bgt	33 x (2.39 x 2.17)	3	1	FOR BRG. TYPE 1800	13
1	--	--	1	bgb	22 1/2 x (2.21 x 1.59)	1	11	FOR BRG. TYPE 900	19
1	--	--	1	bgt	22 1/2 x (2.20 x 1.60)	1	11	FOR BRG. TYPE 900	19
4	--	--	4	bgt	22 1/2 x (2.17 x 1.63)	1	11	FOR BRG. TYPE 900	19
2	--	--	2	bgt	22 1/2 x (2.19 x 1.61)	1	11	FOR BRG. TYPE 900	19
--	--	3	3	bgt	25 1/2 x (2.16 x 1.86)	2	1%	FOR BRG. TYPE 1100	17
--	--	1	1	bgh	25 1/2 x (2.19 x 1.83)	2	1%	FOR BRG. TYPE 1100	17
--	--	1	1	bgt	25 1/2 x (2.20 x 1.82)	2	1%	FOR BRG. TYPE 1100	17
--	--	1	1	bgt	25 1/2 x (2.21 x 1.81)	2	1%	FOR BRG. TYPE 1100	17
4	--	--	4	bgn	7 1/2 x 14GA.	1	3%	A240 TYPE 304 FOR BRG. TYPE 350	20
4	--	--	4	bgn	7 1/2 x 14GA.	1	4%	A240 TYPE 304 FOR BRG. TYPE 400	19
--	--	4	4	bgs	7 1/2 x 14GA.	1	9%	A240 TYPE 304 FOR BRG. TYPE 400	18
--	--	4	4	bgw	11 1/2 x 14GA.	2	0%	A240 TYPE 304 FOR BRG. TYPE 1000	15
--	--	4	4	bgw	12 1/2 x 14GA.	2	3%	A240 TYPE 304 FOR BRG. TYPE 1100	13
--	--	4	4	bha	14 1/2 x 14GA.	2	5%	A240 TYPE 304 FOR BRG. TYPE 1500	11
--	--	4	4	bhb	16 1/2 x 14GA.	3	0%	A240 TYPE 304 FOR BRG. TYPE 1800	8
16	--	--	16	bhc	11 1/2 x 14GA.	1	10%	A240 TYPE 304 FOR BRG. TYPE 900	16
--	--	12	12	bhd	12 1/2 x 14GA.	2	0%	A240 TYPE 304 FOR BRG. TYPE 1100	14

NO. 1 REVISION altered as per 10-11-84 app'1 DATE 10-17-84

HIGH STEEL STRUCTURES, INC. 800 Old Portsmouth Pike
Leicester, Massachusetts 01545 Phone 781/239-580
A Subsidiary of High Industries, Inc.

POT BEARING DETAILS

I-395 BRIDGE OVER PENOBSCOT RIVER

I-395 BRIDGE STA. 164+60.00

PENOBSCOT COUNTY

STATE OF MAINE

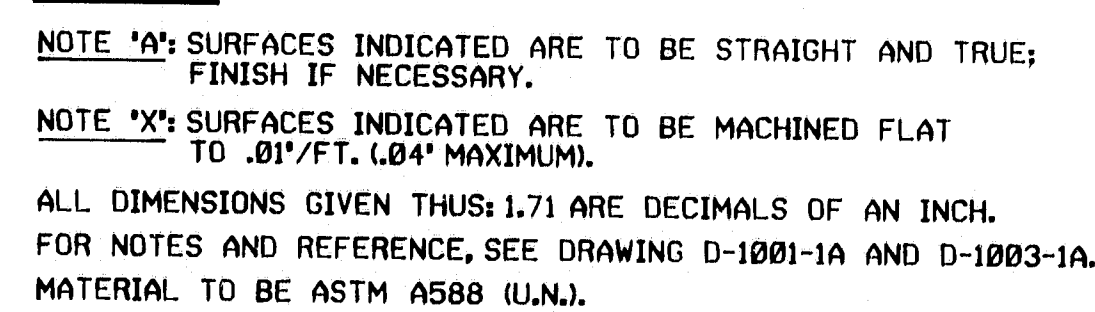
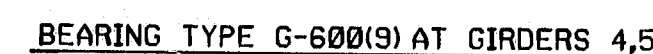
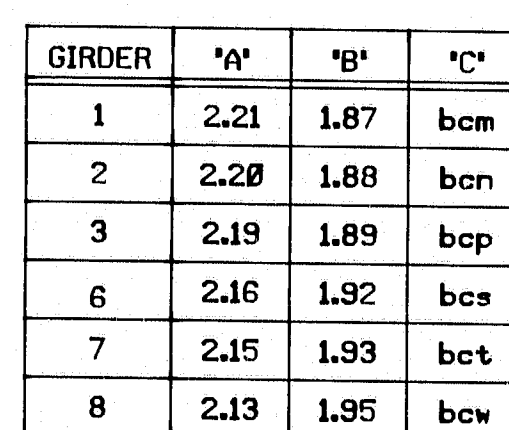
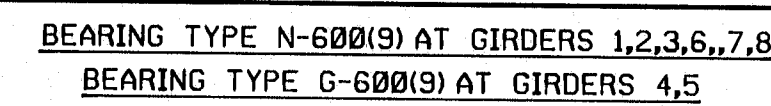
DEPARTMENT OF TRANSPORTATION

STATE CONTRACT OR REF. NO. 6 CONTRACTOR CIANBRO CORP.

IN CHARGE: HINKLE MADE BY: B.J.K. CHK'D BY: JCH DATE: 2-16-84

CONTRACT NUMBER: ME-84088-1,2,3 DRAWING NUMBER: D-1001-1E DATE: 7-2-84




R95-157



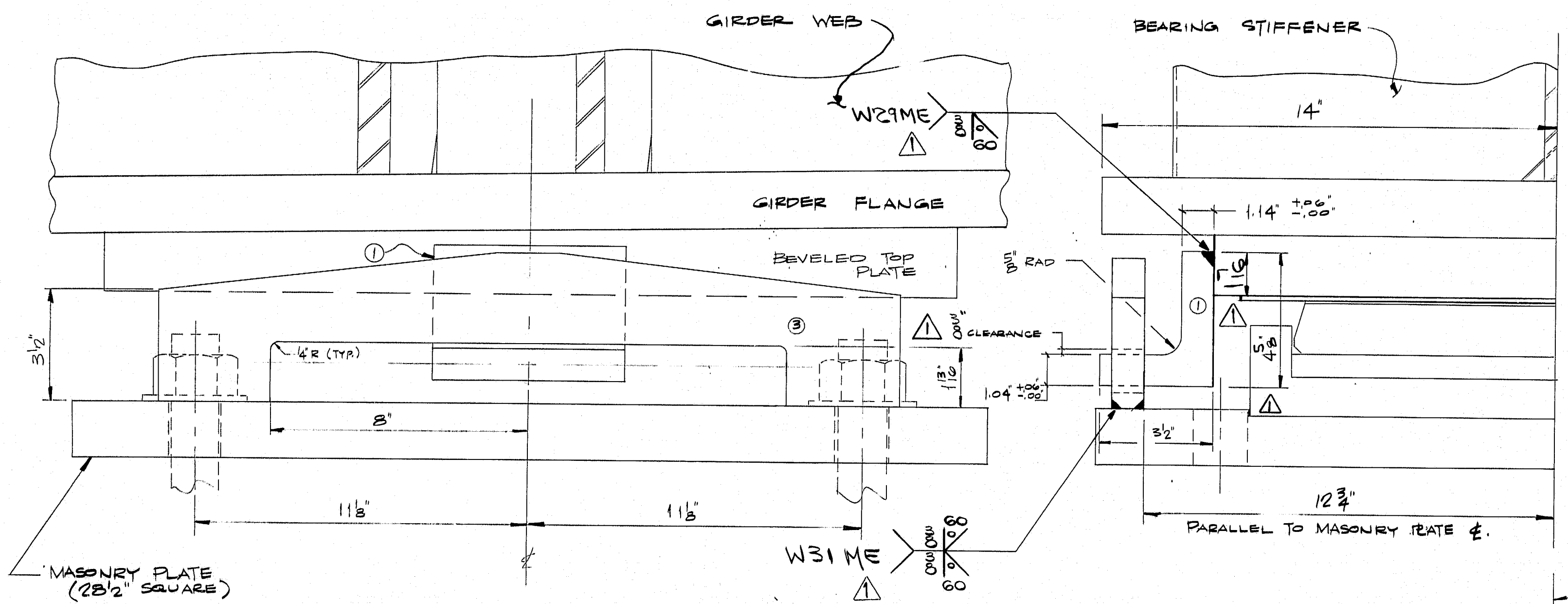
R95-158

		FED. ROAD DIV. NO.	STATE	FED. AID PROJ. NO.		
		1	ME.	I-10-395-(8)217		
BILL OF MATERIAL						
NO.	MARK	DESCRIPTION	LENGTH	REMARKS	ITEM	SW REV EA
		MASONRY PLATES		FOR BRG. TYPE 600		
16	bhf	BAR 4 1/4" x 1'	1	11	ASTM A514	1E 28
8	bhg	2 28 1/2" x 1.71	2	4 1/2		1A 8
		SOLE PLATES		FOR BRG. TYPE N-600(13)		
1	bcm	2 21 3/4" x (2.21 x 1.87)	2	2 1/2		1B 20
1	bcn	2 21 1/4" x (2.20 x 1.88)	2	2 1/2		1B 20
1	bcp	2 21 1/4" x (2.19 x 1.89)	2	2 1/2		1B 20
1	bcs	2 21 1/4" x (2.16 x 1.92)	2	2 1/2		1B 22
1	bct	2 21 1/4" x (2.15 x 1.93)	2	2 1/2		1B 22
1	bcw	2 21 1/4" x (2.13 x 1.95)	2	2 1/2		1B 22
6	bfb	2 18 3/8" x 14 GA.	2	2	A240 TYPE 304	1C 7
12	bhh	2 1 1/4" x 3 1/2" x (1.14 x 1.04)	0	6	MADE FROM SOLID BLOCK (ASTM A514)	1C 26
		SOLE PLATES		FOR BRG. TYPE G-600(13)		
2	bfp	2 21 1/4" x (2.17 x 1.91)	2	2 1/2		1B 22
4	bgf	2 9 3/8" x 14 GA.	2	2	A240 TYPE 304	1C 17
4	bhh					

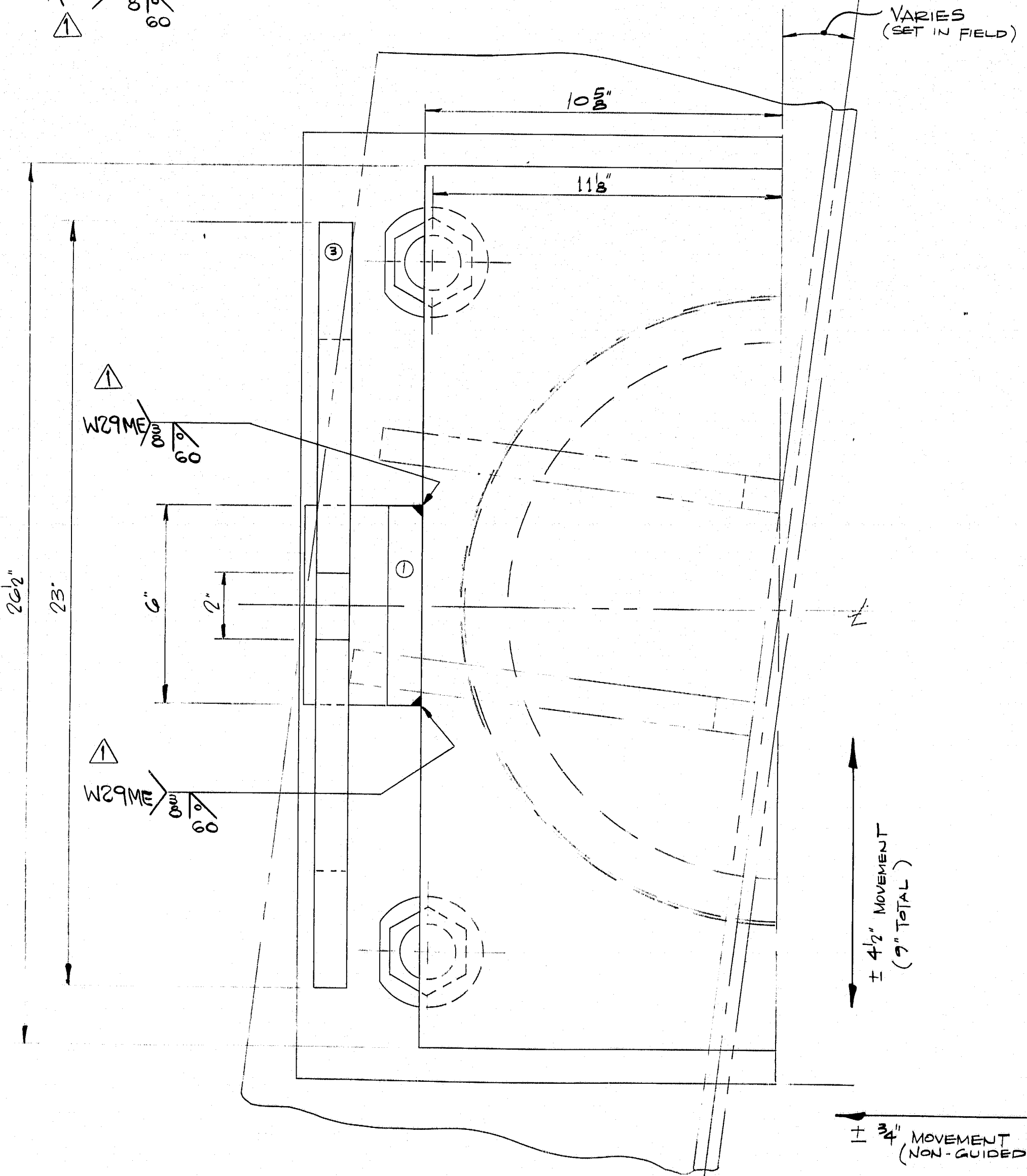
ALL MATERIAL REQUIRED FOR SHIPMENT 22

NO. 	REVISION altered as per 10-11-84 appv	DATE 9-28-84 10-17-84
HIGH STEEL STRUCTURES, INC. 		808 Old Philadelphia Pike Lancaster, Pennsylvania 17603 Phone 717/299-8532
		A Subsidiary of High Industries, Inc.
POT BEARING DETAILS		
I-395 BRIDGE OVER PENOBSCOT RIVER		
I-395 BRIDGE STA. 164+60.00		
PENOBSCOT COUNTY		
STATE OF MAINE		
DEPARTMENT OF TRANSPORTATION		
STATE CONTRACT OR REF. NO. 6 CONTRACTOR CIANBRO CORP.		
IN CHARGE HINKLE	MADE BY B.J.K.	CHECKED BY  DATES 8-17-84
CONTRACT NUMBER ME-84088-2	DRAWING NUMBER	D-1001-1F

AF 22682A



SIDE ELEVATION



PLAN VIEW
(HALF OF DETAIL SHOWN)

- NOTES:
1. WORK THIS DRAWING WITH D-1001-1A.
 2. UPLIFT PER BEARING: 45K MIN.
 3. DIMENSIONS & CLEARANCES GIVEN ALLOW FOR REMOVAL OF BASE/CYLINDER. ALSO, ALLOWS FOR MOVEMENT TO EXTREME LIMIT AS REQUIRED ON CONTRACT DRAWINGS.

BILL OF MATERIAL					
NO.	MARK	DESCRIPTION	LENGTH	REMARKS	ITEM WEIGHT
1		4 5/8 x 3/2 x (11 1/4) - 6"		ASTM A514	
2		4 3/4 x 1" x 11"		ASTM A514	

SHOP NOTE

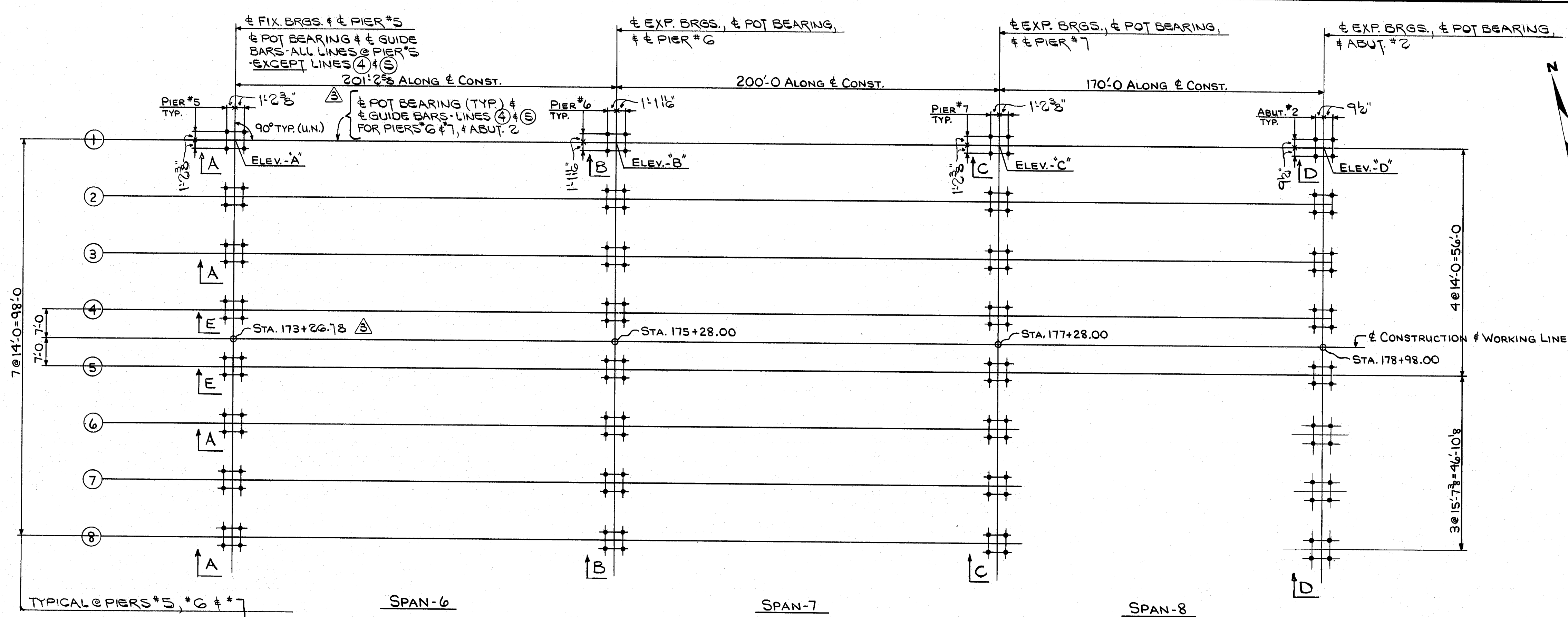
HOLES: REFER TO
BOLTS: DWG. D-1001-1A
PAINT:

R95-159

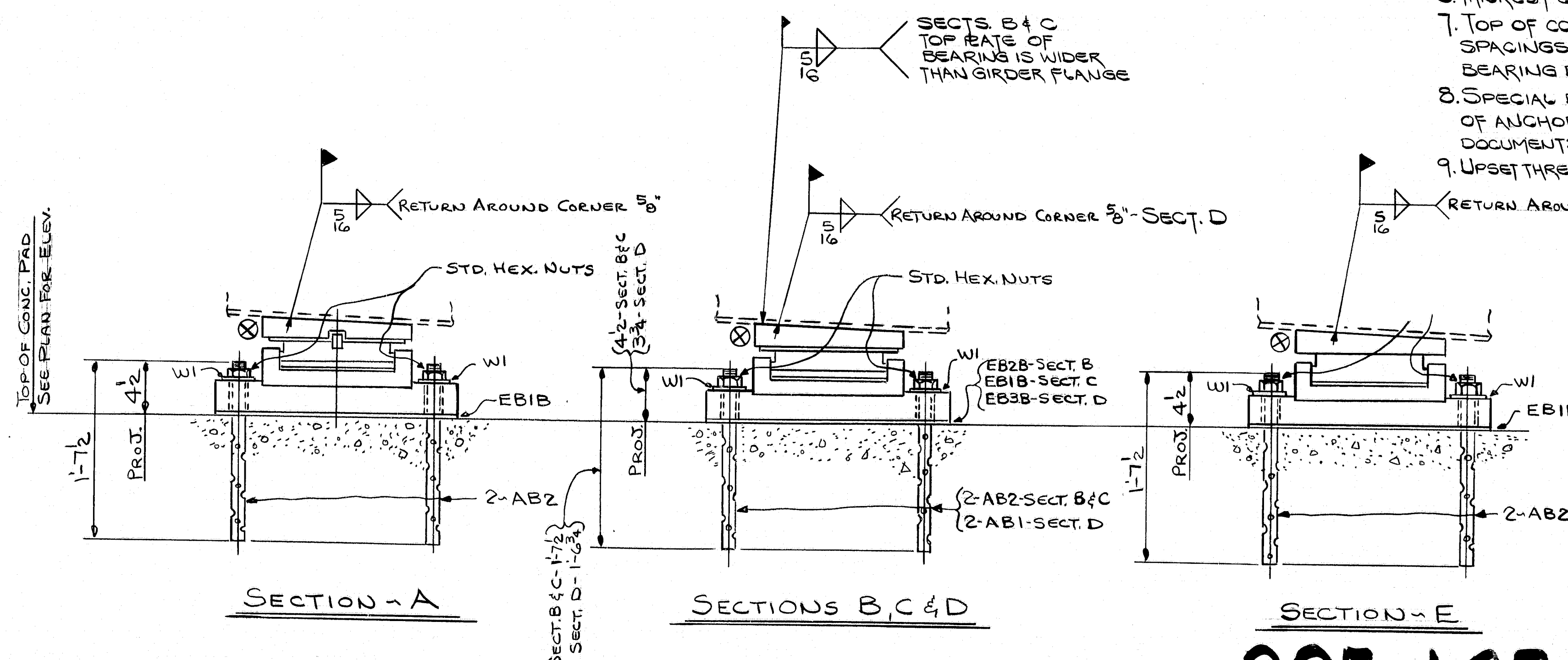
CODE: 6000

NO. 1	REVISION altered as per 10-11-84 appv	DATE 9-28-84 10-17-84
HIGH STEEL STRUCTURES, INC.		
1905 Old Philadelphia Pike Lancaster, Pennsylvania 17603 Phone 717/299-6211		
A Subsidiary of High Industries, Inc.		
STATE OF MAINE - DEPT. OF TRANSPORTATION		
I-395 BRIDGE OVER PENOBSCOT RIVER		
BANGOR - BEEFER PENOBSCOT COUNTY		
UPLIFT DETAILS FOR PIER 2 - SPAN 3		
BEARING DETAILS BY BERMAZ CORP. INT'L, FAIRFIELD, N.J. 07004-4		
STATE CONTRACT OR REF. NO. 6	CONTRACTOR CIANBRO CORP.	
IN CHARGE:	MADE IN U.S.A. CHK. D. BY: B.S.B. BY: DATE: 8-6-84	
CONTRACT ME-84088-1,2,3 DRAWING NUMBER: D-1003-1A		

FED. ROAD DIST. NO.	STATE	FED. AID PROJ. NO.
1	ME	FIG-395-8(2)176



LINE	"A"	"B"	"C"	"D"
1	81.57	77.75	72.10	67.25
2	81.86	78.04	72.39	67.54
3	82.15	78.33	72.68	67.83
4	82.03	78.14	72.48	67.63
5	82.03	78.14	72.48	67.63
6	82.15	78.33	72.68	67.80
7	81.86	78.04	72.39	67.47
8	81.57	77.75	72.10	67.15



NOTES:

- All dimensions are given horizontally.
- Elevations are given to top of concrete pad.
- Anchor bolt settings must be exact in every detail in accordance with this drawing.
- Anchor bolts are furnished by High Steel Structures, Inc., and set by others.
- FOR POT BEARINGS SEE DRAWINGS D-1001-1A THRU D-1001-1F & D-1003-1A.
- THICKEST EDGE OF SOLE PLATE MARKED THUS ⊗
- TOP OF CONCRETE ELEVATIONS & ANCHOR BOLT SPACINGS HAVE BEEN MADE TO CONFORM TO BEARING DETAILS ON DWG. D-1001-1A.
- SPECIAL BRIDGE SEAT PREPARATION & GROUTING OF ANCHOR BOLT HOLES, REQUIRED BY CONTRACT DOCUMENTS, BY OTHERS THAN HIGH STEEL STRUCTURES, INC.
- UPSET THREADS ABOVE NUT FOR ALL ANCHOR BOLTS. (AB MARKS)

NO.	REVISION	Revised span length	DATE
1	1	Control # 12	1-12-85
2	2	Revised ELEVATIONS	DATE 9-28-84
3	3	AS PER POT DES. REV.	DATE 15-84
4	4	General revision to agree with pot bearings	DATE 15-84

HIGH STEEL STRUCTURES, INC.		1905 Old Philadelphia Pike Lancaster, Pennsylvania 17603 Phone 717/298-5211
A Subsidiary of High Industries, Inc.		
ANCHOR BOLT PLAN		
I-395 BRIDGE OVER PENOBSCOT RIVER		
I-395 BRIDGE STA. 164+60.00		
PENOBSCOT COUNTY		
STATE OF MAINE		
DEPARTMENT OF TRANSPORTATION		
STATE CONTRACT OR REF. NO.	6	CONTRACTOR CIANBRO CORP.
IN CHARGE HINKLE	MADE BY FDS	CHK. D. CS
CONTRACT NUMBER ME-84088-3	DRAWING NUMBER	EIC

R95-165